

Kelley

Table of Contents

- 1. Table of Contents .....1
- 2. President's Message .....2
- 3. Safety Precautions .....3
- 4. Operating Instructions .....3
- 5. Maintenance .....5
  - A. General Maintenance .....6
  - B. Lubrication .....6
- 6. Assembly & Installations .....8
  - 6.10 Flail Drum Assembly .....8
  - 6.11 Feed Roller Assembly .....9
  - 6.12 Flail Drum Installation .....10
  - 6.13 Flail Guard Rod Instalation .....12
  - 6.14 Feed Roller Instalation .....14
  - 6.15 Bale Deflector and Spill Screen Instalation .....16
  - 6.16 Bottom Discharge Door Instalation .....17
  - 6.17 Top Discharge Door Instalation .....18
  - 6.18 Discharge Belt Instalation .....20
  - 6.19 Discharge Winch Instalation .....21
  - 6.20 Wheel Assembly .....22
  - 6.21 Hub Assembly .....23
  - 6.22 Cart Assembly .....24
  - 6.22 Light Instalation .....26
  - 6.23 Tub to Cart Instalation .....28
  - 6.24 CV Instalation .....29
  - 6.25 CV Assembly .....30
  - 6.26 Cylinder Hydraulics .....32
  - 6.27 Motor Hydraulics .....34
  - 6.28 Cylinder Assembly .....36
  - 6.29 Safety Decal Placement .....38
- 7. Specifications .....40

## 2. President's Message

**Congratulations on your purchase of the *Bale Pro 7000*!** Bale Pro, a proven name in livestock feed handling equipment, is manufactured by Highline Mfg. Inc. A Company with a manufacturing team that has over 25 years' experience in the farm implement industry.

This operator's manual has been prepared to provide information necessary for safe and efficient operation of your *Bale Pro 7000*. In the manual you will find safety procedures, maintenance routines and detailed parts diagrams.

The *Bale Pro 7000* was designed for controlled, more aggressive processing with less bunching. A little time and effort spent in proper maintenance will increase the performance and durability of your bale processor.

In order to maintain high standards, improvements are made from time to time. Highline Mfg. Inc. reserves the right to make those changes and improvements when practical to do so without incurring any obligation to make such changes and improvements on machines sold previously.

Should the need arise, this manual will assist you in acquiring replacement parts. Should your dealer not have the parts you require in stock, the dealer will be happy to order them for you. Also if you should find that you require information not covered in this manual, feel free to consult your local dealer or Highline.

Highline Mfg. Inc. thanks and congratulates you for selecting a *Bale Pro 7000* as the machine of your choice.

Sincerely,

Raymond J. Bussière, President

---

PO Box 307, Vonda, Saskatchewan, S0K 4N0  
Phone 1-800-665-2010 Fax (306) 258-2010  
Internet Address: <http://www.highline.com/>


---

### 3. Safety Precautions

## WORK SAFELY - FOLLOW THESE RULES

CAREFUL OPERATION IS THE BEST INSURANCE AGAINST AN ACCIDENT

- Keep children and adults away from discharge area while processing.
- Know the controls and what they do.
- Check machine to ensure nothing restricts moving or rotating parts.
- Ensure PTO is disengaged before starting tractor.
- Never leave tractor while PTO is engaged.
- Lower forks to ground after operation.
- Never attempt to manually remove debris while PTO is activated.
- Do not transport Bale Pro on highway with CV extension shaft on machine or with bales in tub or on the forks
- Disconnect CV before unplugging or adjusting processor.
- Always keep safety shields in place.
- Relieve pressure in hydraulic lines before disconnecting lines or performing other work on the hydraulic system.
- Never allow anyone to stand behind processor while loading bales.
- Ensure the discharge door is fully up with a nut and bolt installed to lock it to the tub when transporting machine

 ***Before operating the Bale Pro 7000, be sure to review all the instructions and familiarize yourself with the processor's features.***

### 4. Operating Instructions

Successful operation of the Bale Pro 7000 is dependent upon the quality of the bale, height of the feed rollers and flail guard and also on the operator. The following steps ensure proper operation. Please read carefully before operating your Bale Pro 7000.

1. Ensure that drawbar on tractor is extended such that the pin is 17 inches from the groove on the PTO on tractor.
2. It is recommended that hitch tongue be placed in the second hole from the top of the BP7000 hitch frame. This will ensure proper drawbar location and extend the life of the CV.
3. Ensure that the machine is properly greased at all locations (see pages 6 and 7).
4. The top discharge deflector is adjusted by means of the winch located on the front of the machine. Crank the winch clockwise to raise the deflector, and counterclockwise to lower it. NOTE: After lowering the door, turn the winch handle clockwise until you hear it click twice. This locks the winch and door in place

5. To adjust the bottom deflector, simply stand in front of the machine, pull the handle towards yourself, and raise or lower the door as required.
6. The adjustment for the flail guard rods is similar to the bottom deflector adjustment. Pull the handle towards yourself and raise or lower the handle. Raising the handle will make the Bale Pro more aggressive and lowering the handle will make it more aggressive. There are four different settings for the flail guard rods.

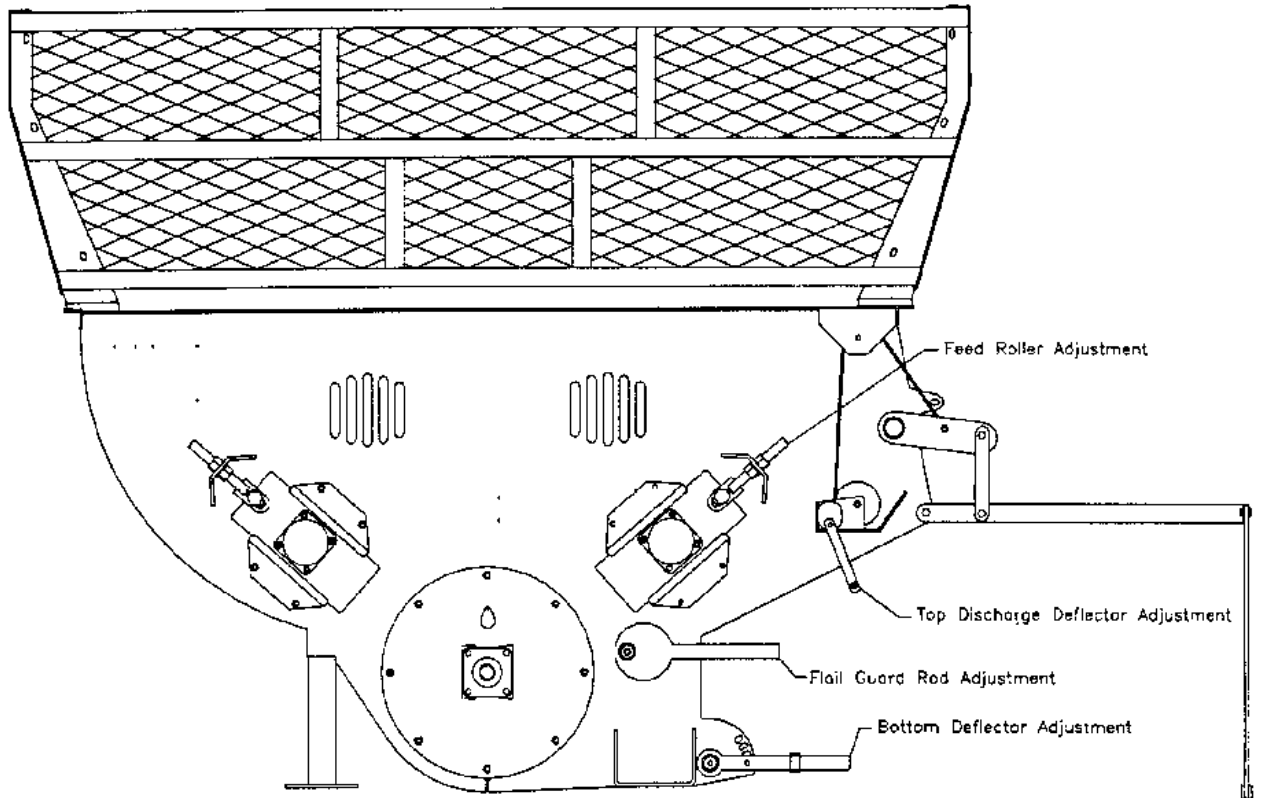


Figure 1 Manual Controls

**NOTE:** If the processor is too aggressive, the flails will slap back on the flail drum. Continued "backslap" can cause damage to the flail drum, flails and flail bushings. Therefore, avoid excessive "backslap" whenever possible by adjusting the flail guard rods.

7. Adjust the feed rollers with the feed roller adjusting rods to accommodate the bale size. Generally the feed rollers should be raised for larger bales and lowered for smaller bales. Major adjustments may effect the aggressiveness of the processor.
8. Before loading bale, engage PTO to ensure that the flail drum if it is operating properly. Start feed rollers using the hydraulic controls and check if the feed rollers turn in both directions. If your tractor has hydraulic flow control, alter flow so the feed rollers rotate at an adequate speed for the condition of your bales.

9. To load, lower forks **completely** and back up to bale slowly. Raise forks until bale falls into the processor. Another bale may be loaded onto the forks while a bale is in the processor. If a bale is loaded on the forks while one is shredded, raise the forks as high as possible, making sure that the bale on the forks does not interfere with the bale in the tub. This will reduce pressure on the hydraulic cylinder lift assembly. Orientation of the bale during loading causes the hay/straw to discharge from the processor differently. If the bale is shredded in the same direction as it was baled, the hay/straw will generally come off in layers. If the bale is shredded in the opposite way, feeding may be uneven.
  - **Do not dislodge frozen bales with forks, otherwise damage to the lift mechanism may result**
10. When ready, engage tractors PTO at idle. Increase PTO speed until it reaches 1000 RPM. Make sure that before PTO is engaged, the forks are not interfering with the bale in the tub. To process, rotate the bale by means of the feed rollers. If the bale stops rotating, reverse the direction of the feed rollers.
11. Before stopping CV, idle tractor down to reduce flail "back slap".



**WARNING:** Warranty will be void if any component of this machine is altered or modified in any way, unless written permission is given by Highline Mfg. Inc.

## 5. Maintenance

*Please follow these maintenance steps, to ensure trouble free operation of your Bale Pro 7000*

### A. General Maintenance

- Twine must be removed from the flail drum **at least** every 25 bales. Premature bearing failure may occur if the twine is allowed to build up on the drum.
- Flail bolts should be tightened after the first ten bales then rechecked after approximately 200 bales
- Pipe Clamps (page 22) should be checked every 50 bales, and tightened if necessary

### B. Lubrication

Maintaining proper lubrication of the Bale Pro 7000 is crucial for trouble free operation. Figures 2 and 3 show points that require regular greasing. Below is a list of the lubrication points and the frequency of greasing of these points.

- |   |  |
|---|--|
| <p>1. Ball Shear Assembly<br/><b>Grease every 8 hours.</b></p> <p>2. Cross and Bearing<br/><b>Grease every 8 hours.</b></p> <p>3. Telescopic Members<br/><b>Grease every 8 hours.</b></p> <p>4. Ball and Socket<br/><b>Grease every 8 hours.</b></p> <p>5. Center Housing<br/><b>Grease every 24 hours.</b></p> | <p>6. Flail Drum Bearings (Front and Rear)<br/><b>Grease every fifty bales</b></p> <p>7. Feed Roller Bearings (Left and Right)<br/><b>Grease every one hundred bales.</b></p> <p>8. Pipe Clamps (Left and Right)<br/><b>Grease every one hundred bales.</b></p> <p>9. Wheel Hub Bearings (Left and Right)<br/><b>Grease every one hundred bales.</b></p> <p>10. Forks (Left and Right)<br/><b>Grease every one hundred bales.</b></p> <p>11. Discharge Deflector Pipe (Front and Rear)<br/><b>Grease every one hundred bales</b></p> |
|---|--|

**Note:**

- ▶ When CV is under constant angle applications, there must be a lube interval of 4 hours for components 1 through 5
- ▶ Use low temperature grease when the temperature reaches below 0° Celsius (32° Fahrenheit)

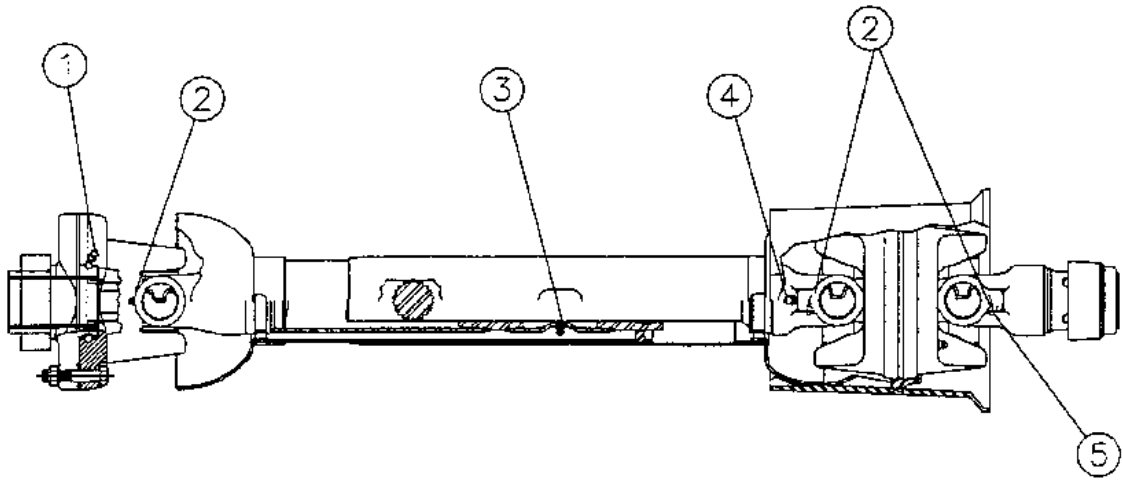


Figure 2 CV Lubrication Points

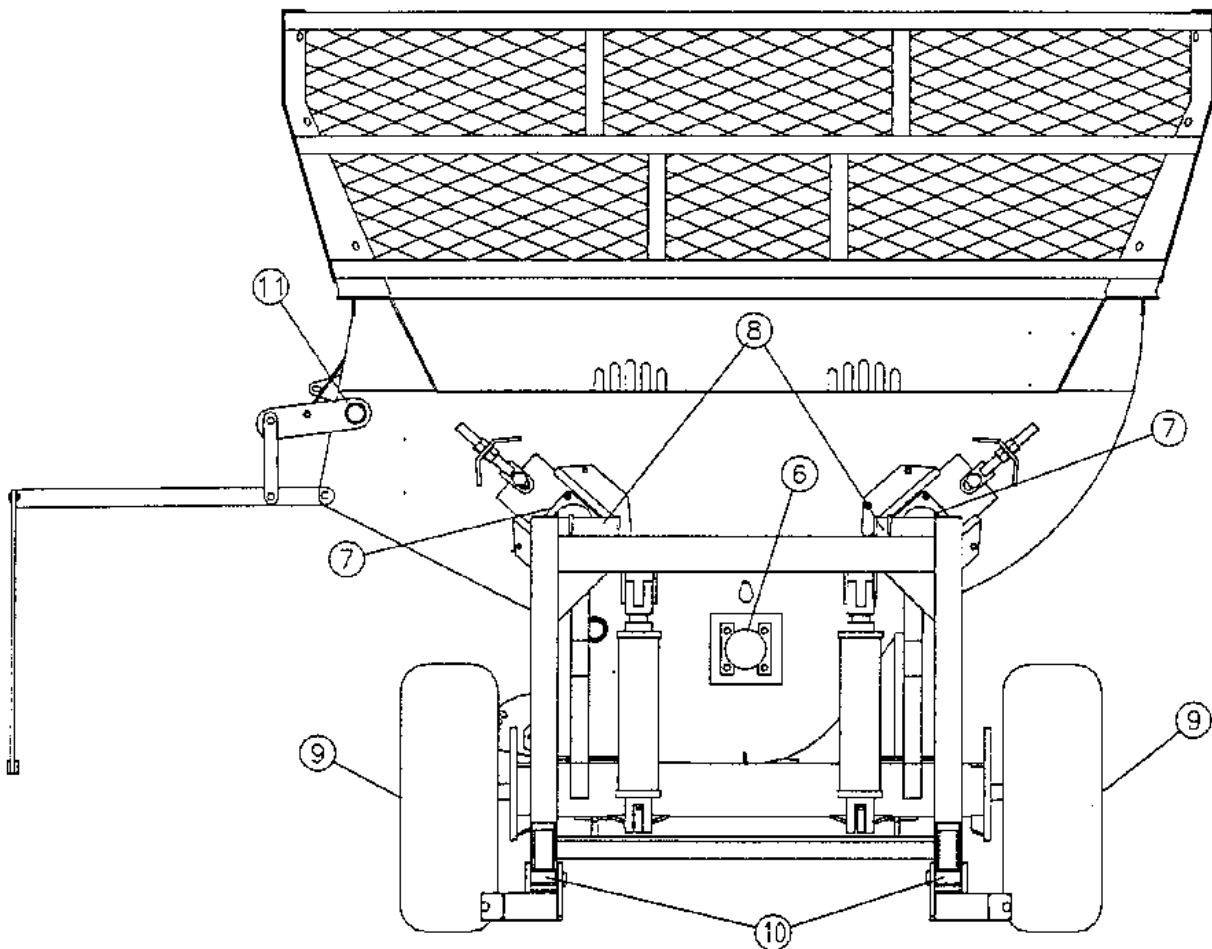
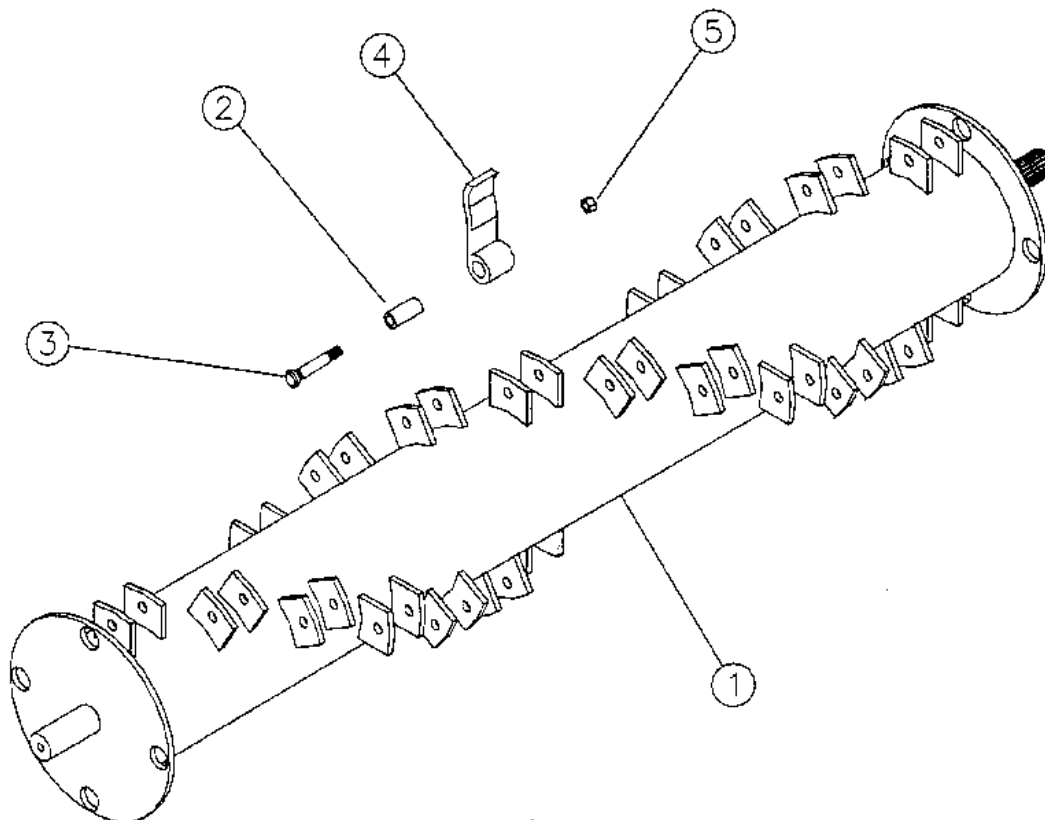


Figure 3 Bale Pro Lubrication Points

6. Assembly & Installations

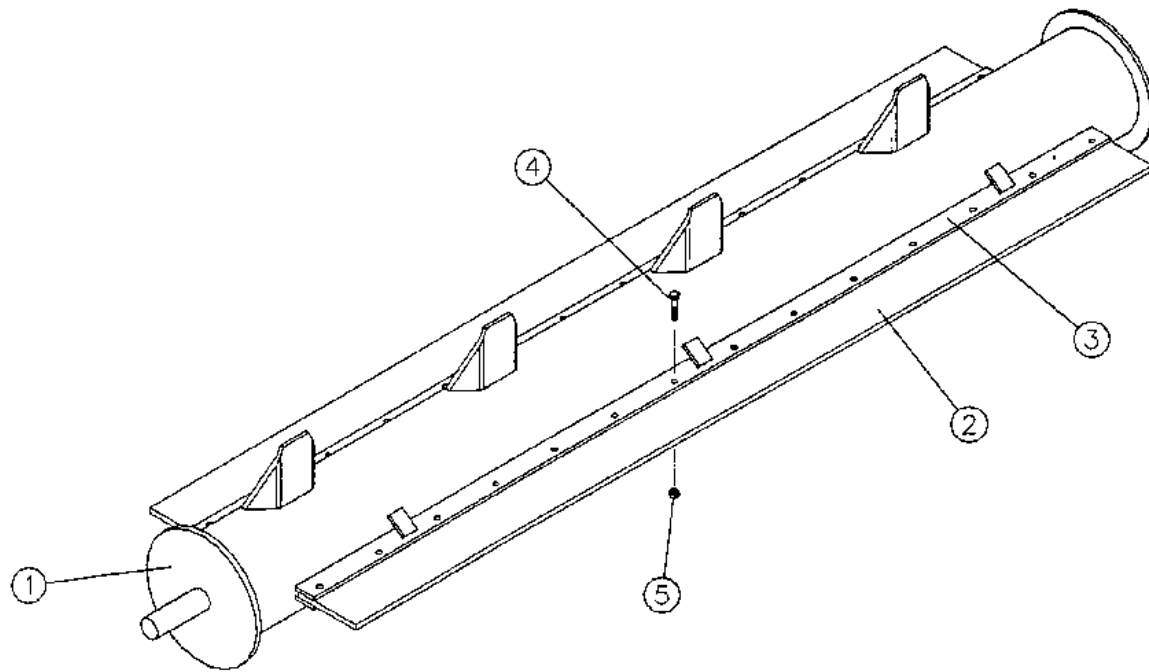
6.10 Flail Drum Assembly



Item No.	Part No.	Description	Qty
1	49009	Flail Drum (no flails)	1
2	E2083	Flail Bushing	26
3	45099	5/8" x 3-3/4" Stud, Unf, Gr 8	26
4	E3694	Flail	26
5	31170	5/8" Stover Locknut, Unf	26
	49008	Flail Drum Complete (flails installed)	

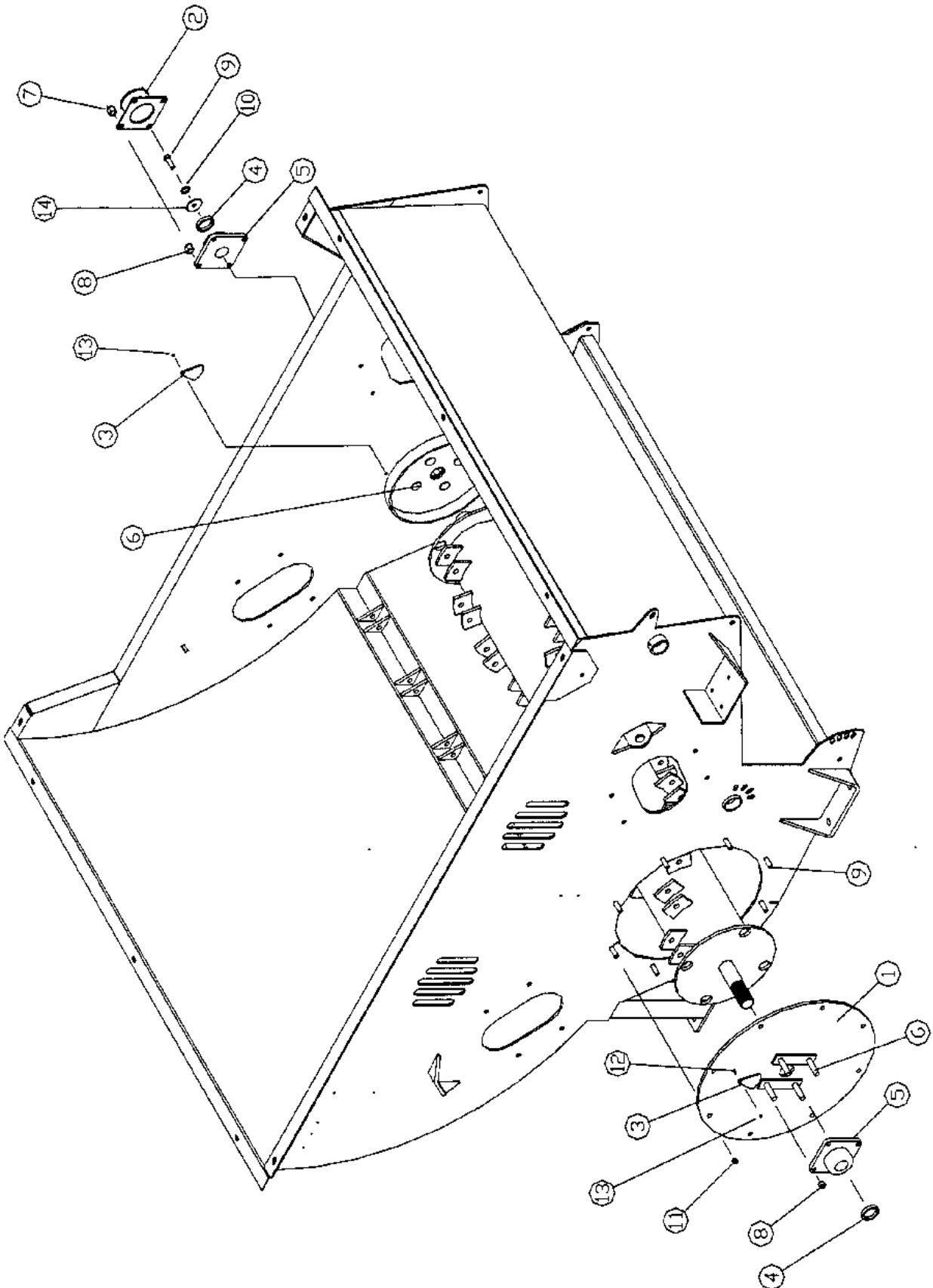


### 6.11 Feed Roller Assembly



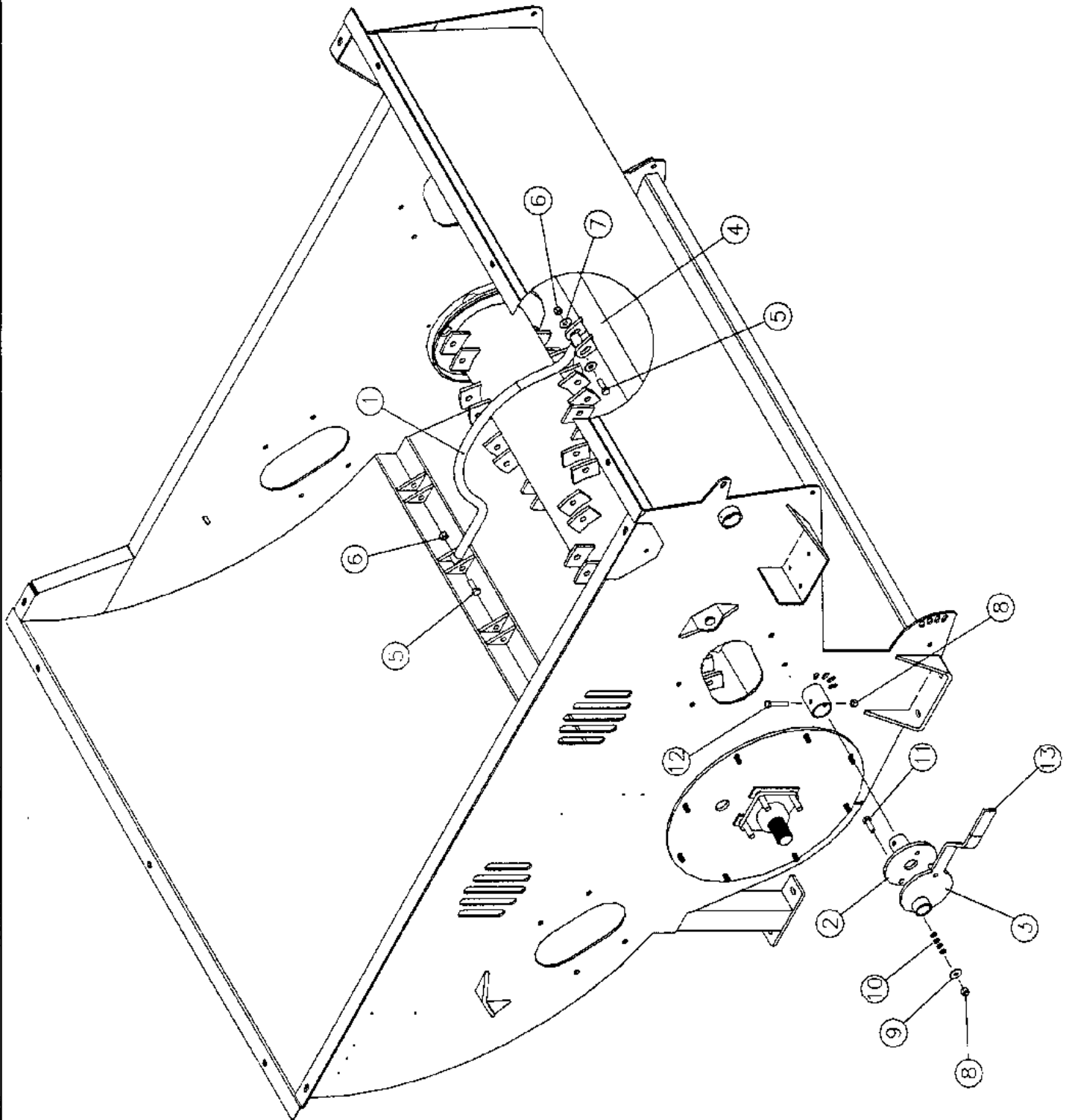
Item No.	Part No.	Description	Qty
1	49027	Feed Roller	1
2	E3581	3/8" x 4-1/2" x 62" Belting	2
3	E3582	3/8" x 1-1/2" x 62" Back Plate	2
4	31047	5/16" x 1 3/4" Hex Bolt, Unc, Gr 5	28
5	31177	5/16" Nylock Locknut, Unc, Gr 5	28
	49017	Feed Roller Complete	

### 6.12 Flail Drum Installation



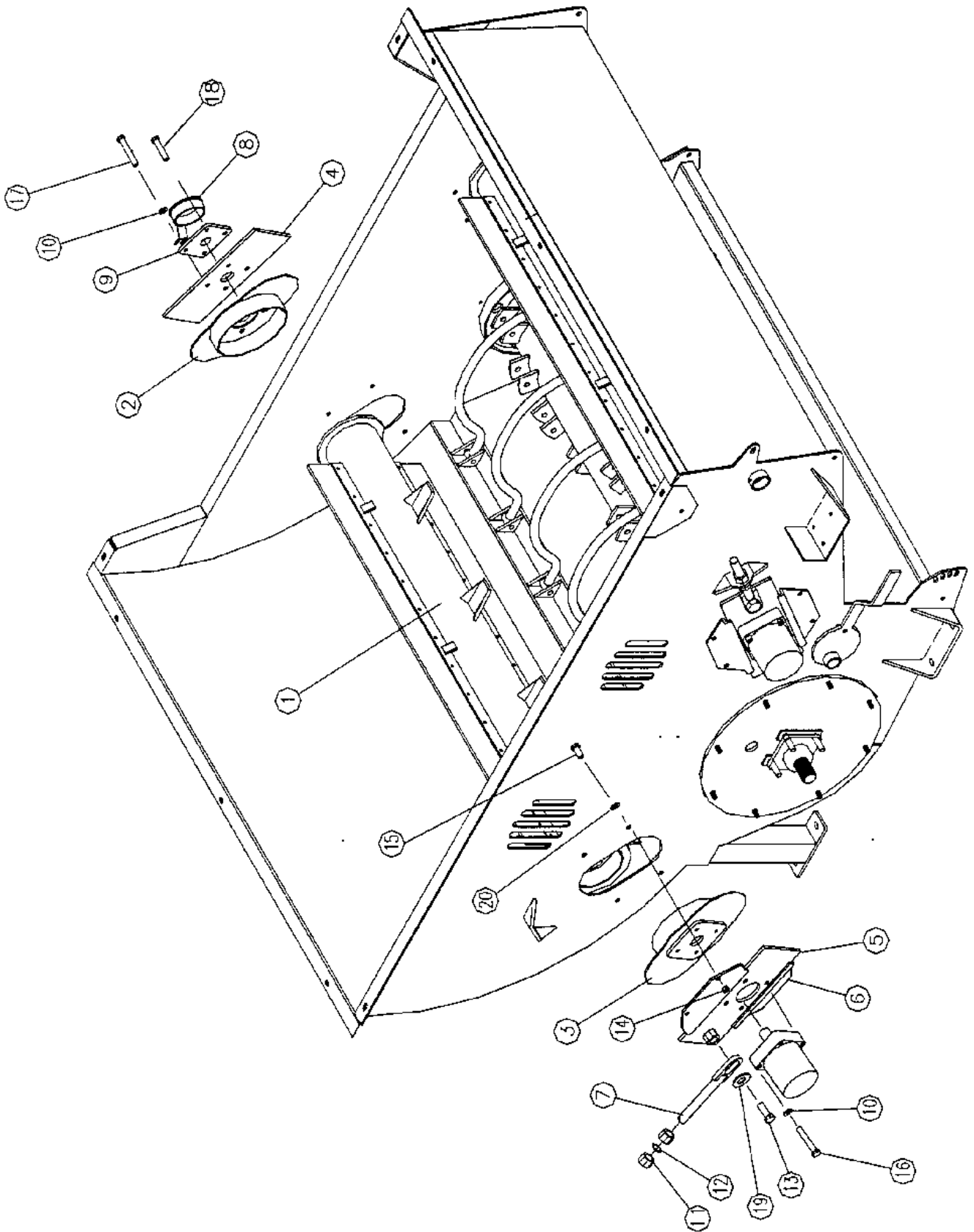
Item No.	Part No.	Description	Qty
1	49013	Front Bearing Plate	1
2	49054	Flail Drum Guard	1
3	E3722	Cover	2
4	E3646	Spacer Bushing	2
5	92091	1-3/4" Flange Bushing	2
6	31014	5/8" x 3" Carriage Bolt, Unc, Gr 5	8
7	31168	5/8" Nylock Jamnut	4
8	31178	5/8" Nylock Locknut	8
9	31016	1/2" x 1-1/2" Hex Bolt, Unc, Gr 5	9
10	31244	1/2" Lockwasher	1
11	31173	1/2" Nylock Locknut, Unc, Gr5	8
12	31012	1/4" x 1" Carriage Bolt, Unc, Gr 5	2
13	31174	1/4" Nylock Locknut, Unc, Gr 5	2
14	92081	2" x 9/16" x 3/16" Washer	1

### 6.13 Flail Guard Rod Installation



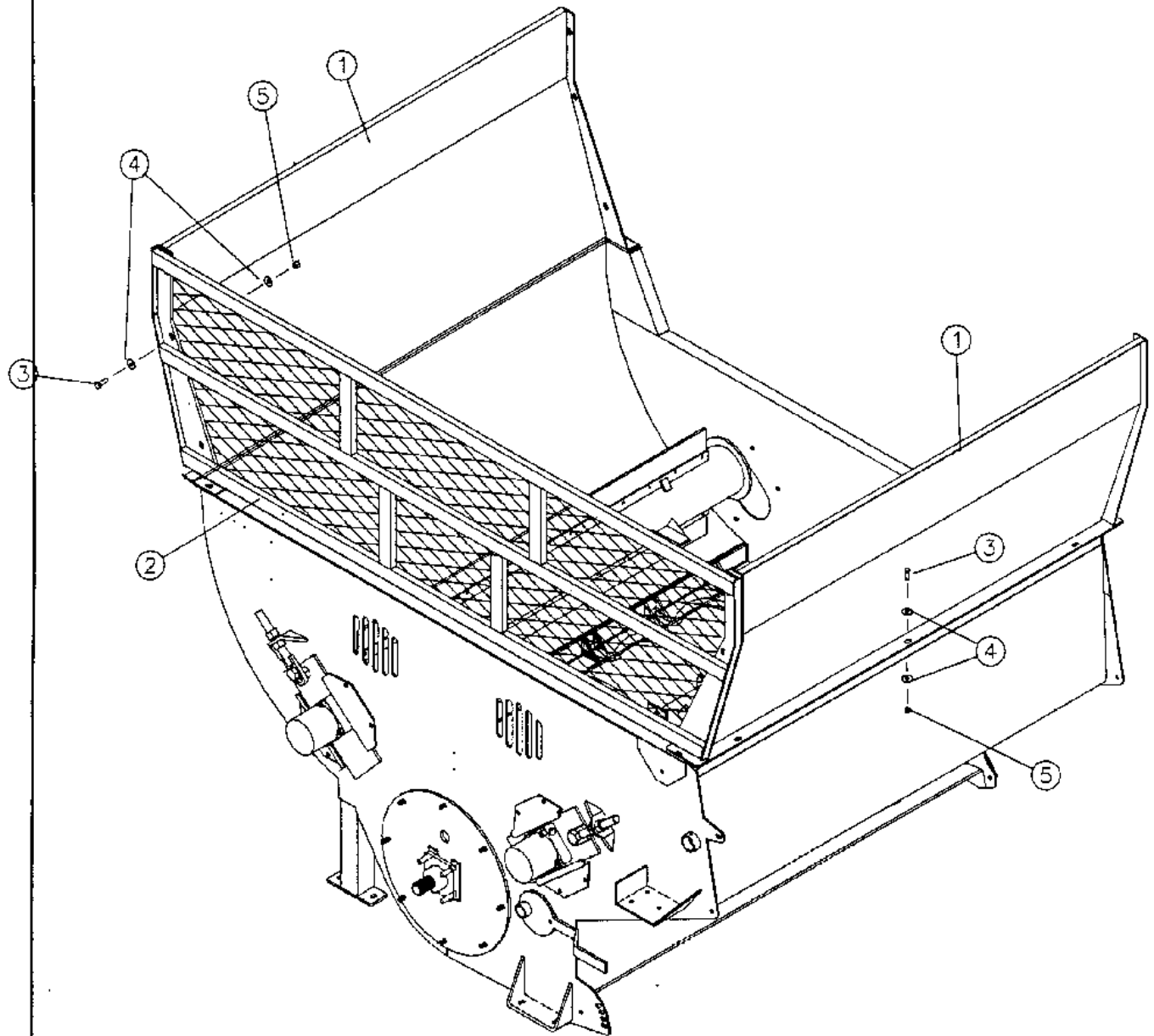
Item No.	Part No.	Description	Qty
1	49108	Flail Guard Rod	6
2	49100	Flail Guard Rod Adjustment Pin	1
3	49101	Flail Guard Rod Adjustment Handle	1
4	49110	Flail Guard Rod Adjustment Bar	1
5	31058	9/16" x 3-1/2" Hex Bolt, Unc, Gr 5	12
6	31179	9/16" Nylock Locknut, Unc, Gr 5	12
7	31242	9/16" Flatwasher	12
8	31173	1/2" Nylock Locknut, Unc, Gr 5	2
9	31236	1/2" Flatwasher	1
10	31668	3/4" Spring Washer	4
11	31017	1/2" x 1-3/4" Hex Bolt, Unc, Gr 5	1
12	31021	1/2" x 3" Hex Bolt, Unc, Gr 5	1
13	92127	Vinyl Cover, 3/8" x 1-1/2"	1

### 6.14 Feed Roller Installation



Item No.	Part No.	Description	Qty
1	49017	Feed Roller (complete)	2
2	47012	Rear Twine Guard	2
3	47019	Front Twine Guard	2
4	49015	Rear Slide Plate	2
5	49096	Front Slide Plate	2
6	E3227	Slide Plate Retainer	8
7	49107	Feed Roller Adjusting Rod	4
8	49053	Feed Roller Guard	2
9	92094	1-3/8" Flange Bearing	2
10	31244	1/2" Lockwasher	16
11	31159	1" ACME Right Hand Nut	8
12	31243	1" Lockwasher	4
13	31448	1" x 2" Hex Bolt, Unc, Gr 8	4
14	31173	1/2" Nylock Locknut, Unc, Gr 5	16
15	31016	1/2" x 1-1/2" Hex Bolt, Unc, Gr 5	16
16	31059	1/2" x 2-1/2" Socket Head Cap Screw	8
17	31070	1/2" x 2" Hex Bolt, Unc, Gr 5	4
18	31017	1/2" x 1-3/4" Hex Bolt, Unc, Gr 5	4
19	31235	1" Flatwasher	4
20	31236	1/2" Flatwasher	16

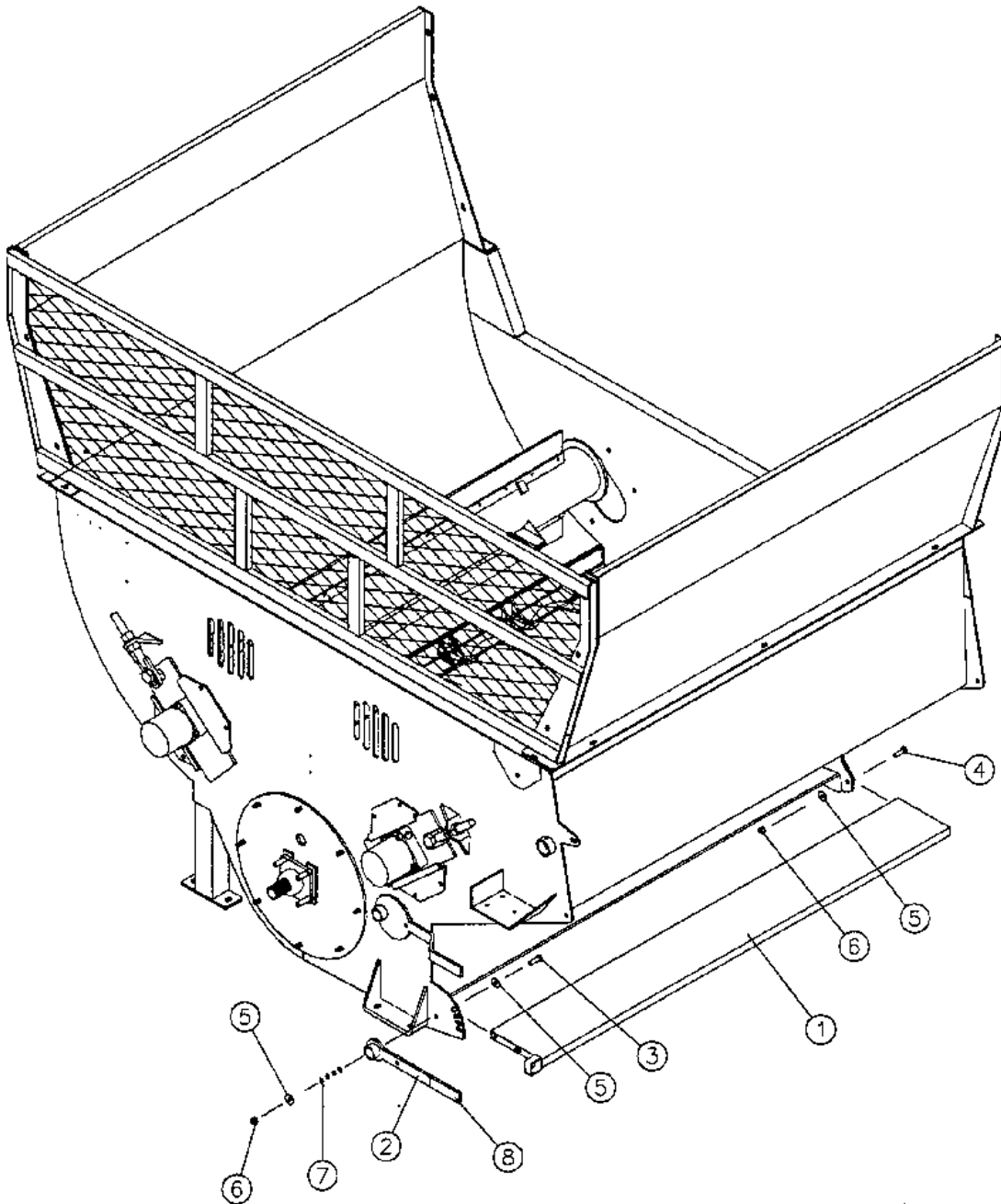
### 6.15 Bale Deflector and Spill Screen Installation



Item No.	Part No.	Description	Qty
1	49014	Bale Deflector	2
2	49007	Spill Screen	1
3	31016	1/2" x 1-1/2" Hex Bolt, Unc, Gr 5	16
4	31236	1/2" Flatwasher	32
5	31173	1/2" Nylock Locknut	16

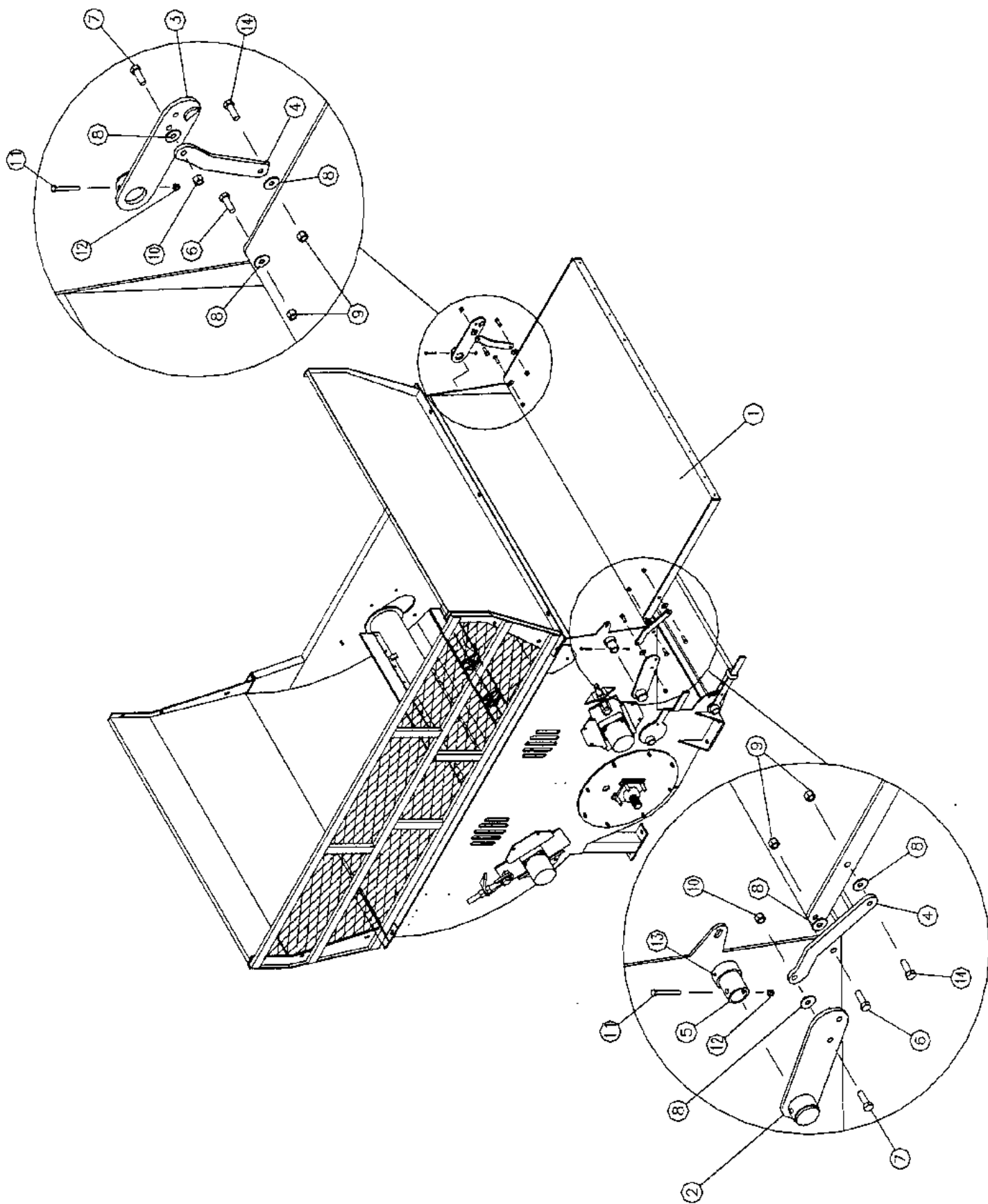


### 6.16 Bottom Discharge Door Installation



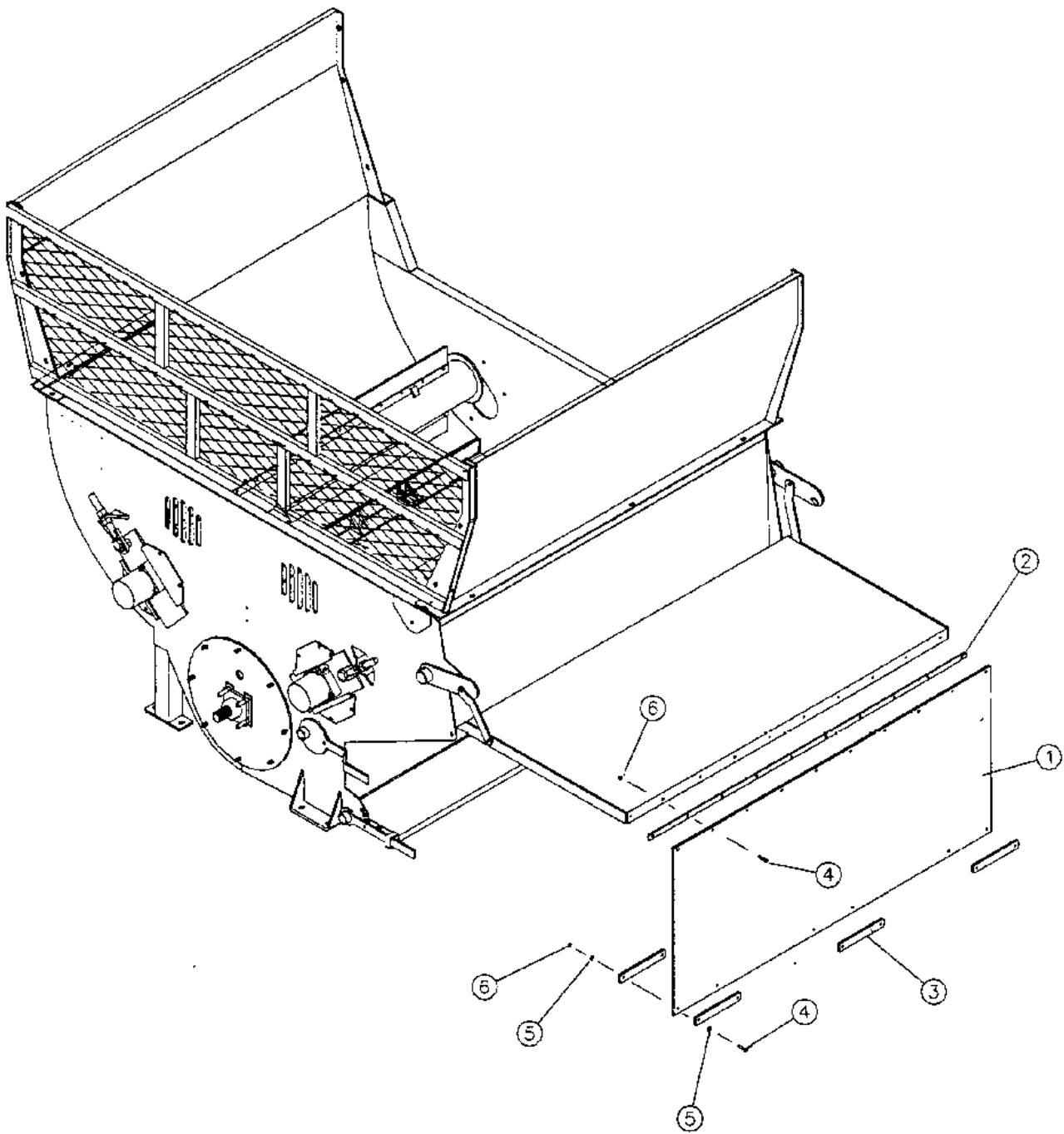
Item No.	Part No.	Description	Qty
1	49099	Bottom Discharge Door	1
2	49102	Bottom Deflector Handle	1
3	31431	1/2" x 2-1/4" Carriage Bolt, Unc, Gr 5	1
4	31016	1/2" x 1-1/2" Hex Bolt, Unc, Gr 5	1
5	31236	1/2" Flatwasher	3
6	31173	1/2" Nylock Locknut, Unc, Gr 5	2
7	31668	3/4" Spring Washer	4
8	92127	Vinyl Cover, 3/8" x 1-1/2"	1

### 6.17 Top Discharge Door Installation



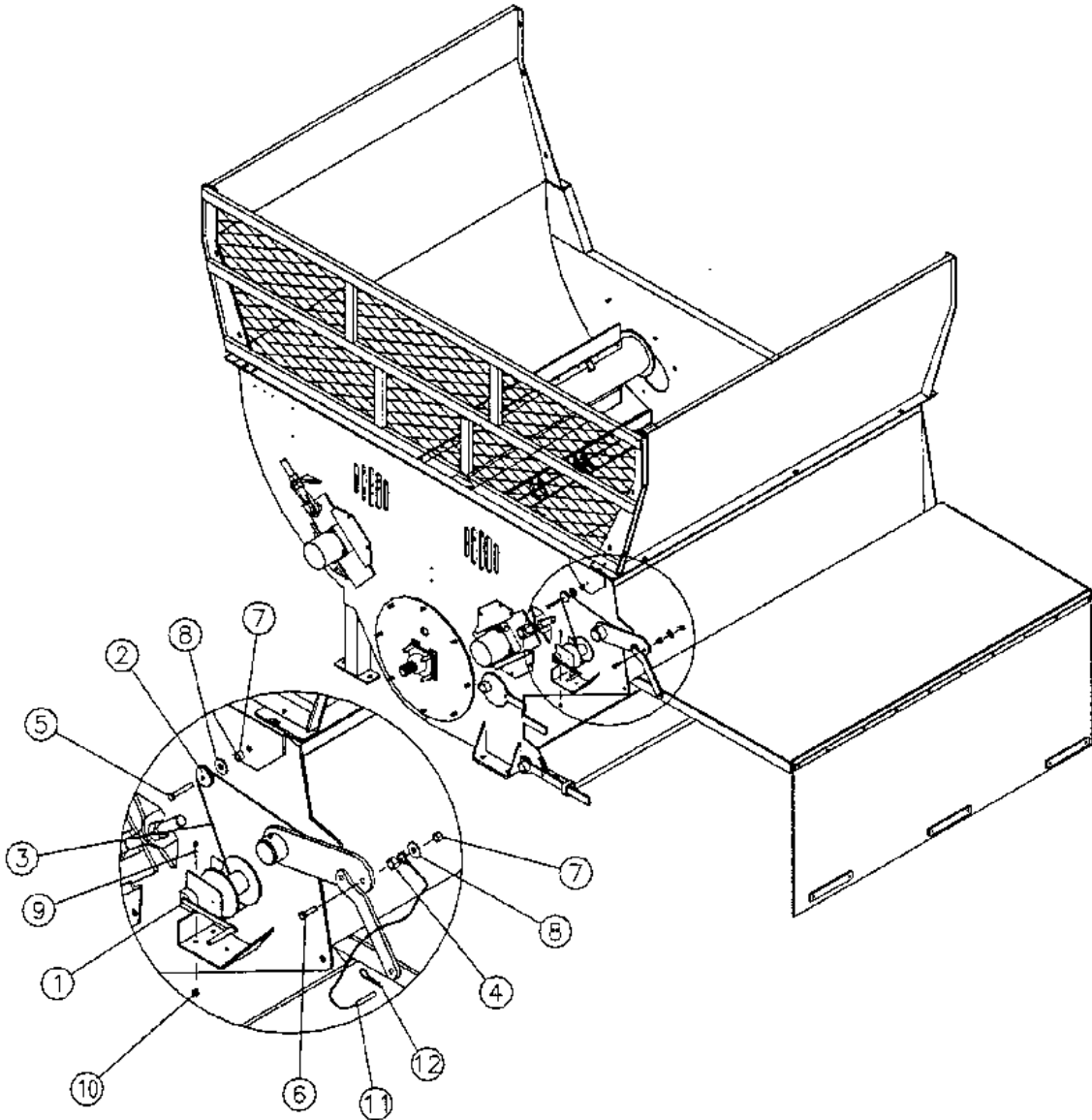
Item No.	Part No.	Description	Qty
1	49098	Discharge Door	1
2	49103	Front Linkage Arm	1
3	49104	Rear Linkage Arm	1
4	E5032	Connecting Linkage	2
5	E5019	Discharge Door Adjusting Pipe	1
6	31016	1/2" x 1-1/2" Hex Bolt, Unc, Gr 5	2
7	31332	1/2" x 1-1/4" Hex Bolt, Unc, Gr 5	2
8	31236	1/2" Flatwasher	6
9	31173	1/2" Nylock Locknut, Unc, Gr 5	4
10	30611	1/2" Nylock Jamnut, Unc, Gr 5	2
11	30374	3/8" x 3" Hex Bolt, Unc, Gr 5	2
12	31176	3/8" Nylock Locknut, Unc, Gr 5	2
13	30207	Grease Zerk	2
14	31017	1/2" x 1-3/4" Hex Bolt, Unc, Gr 5	2

### 6.18 Discharge Belt Installation



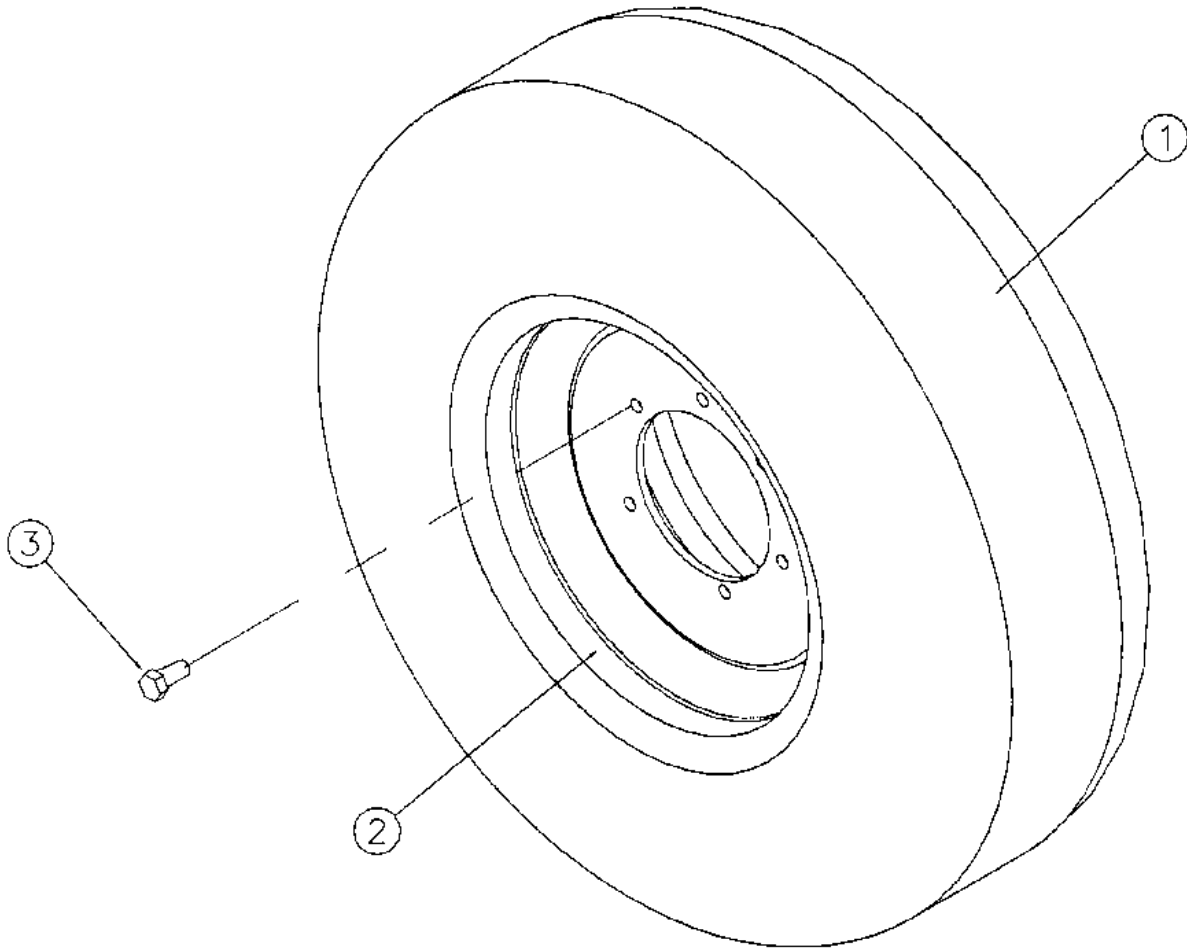
Item No.	Part No.	Description	Qty
1	E5018	Discharge Belting	1
2	E5017	Belting Retaining Plate	1
3	E3003	Belting Weight Plate	6
4	31046	5/16"x 1-1/2" Hex Bolt, Unc, Gr 5	16
5	31239	5/16" Flatwasher	12
6	31177	5/16" Nylock Locknut, Unc, Gr 5	16

### 6.19 Discharge Winch Installation



Item No.	Part No.	Description	Qty
1	30608	Winch	1
2	30610	Pulley	1
3	E5038	Winch Cable	1
4	E5037	Bushing	1
5	31018	1/2" x 2-1/2" Hex Bolt, Unc, Gr 5	1
6	31017	1/2" x 1-3/4" Hex Bolt, Unc, Gr 5	1
7	31173	1/2" Nylock Locknut, Unc Gr 5	2
8	31236	1/2" Flatwasher	2
9	31573	3/8" x 1" Carriage Bolt, Unc, Gr 5	3
10	31176	3/8" Nylock Locknut, Unc, Gr 5	3
11	49113	Lock, Door, Discharge	1
12	91608	Pin, Hair, 1/8" x 2-1/2"	2

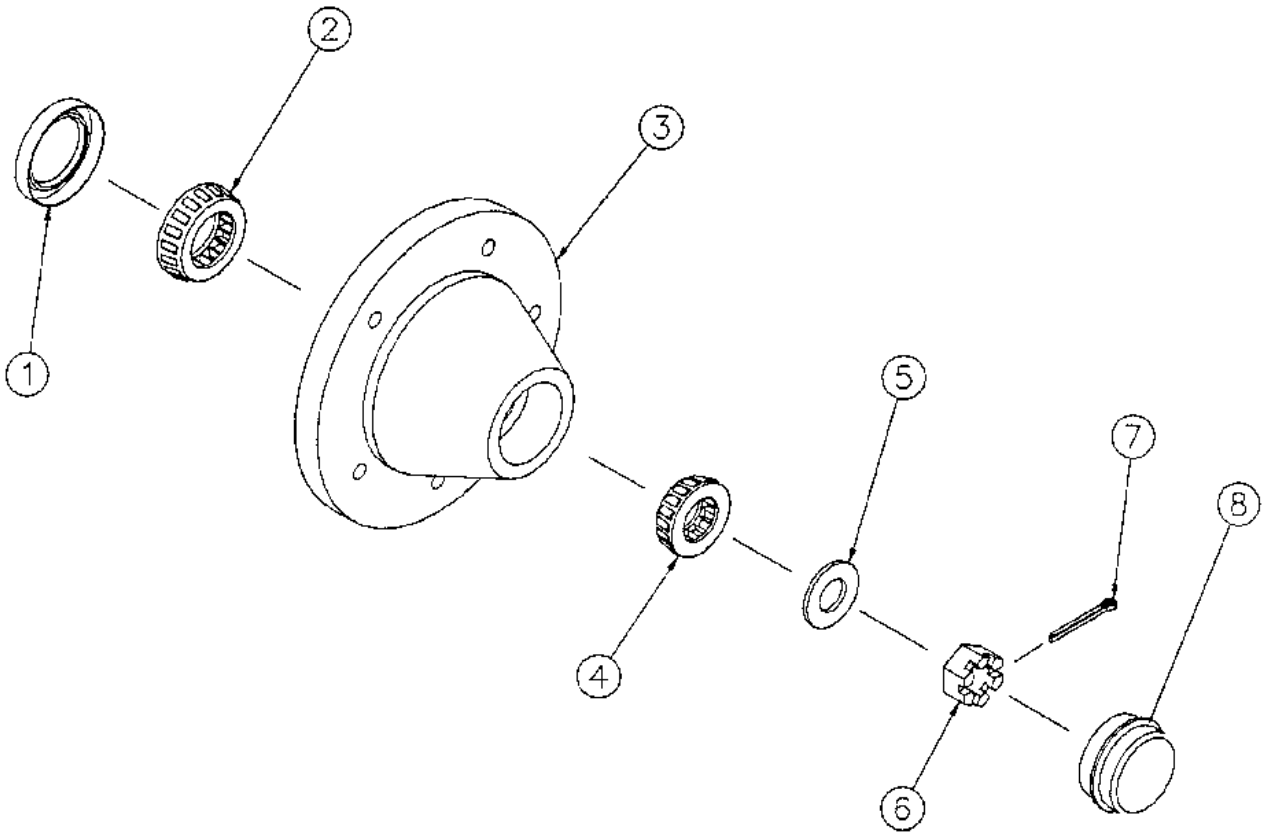
### 6.20 Wheel Assembly



Item No.	Part No.	Description	Qty
1	45222	11L - 15FI Highway Service Tire	1
2	45223	15 x 8 Rim	1
3	30347	1/2" Wheel Bolt	6
Not Shown	91048	Valve Stem	1
	49089	Complete Wheel (off white)	

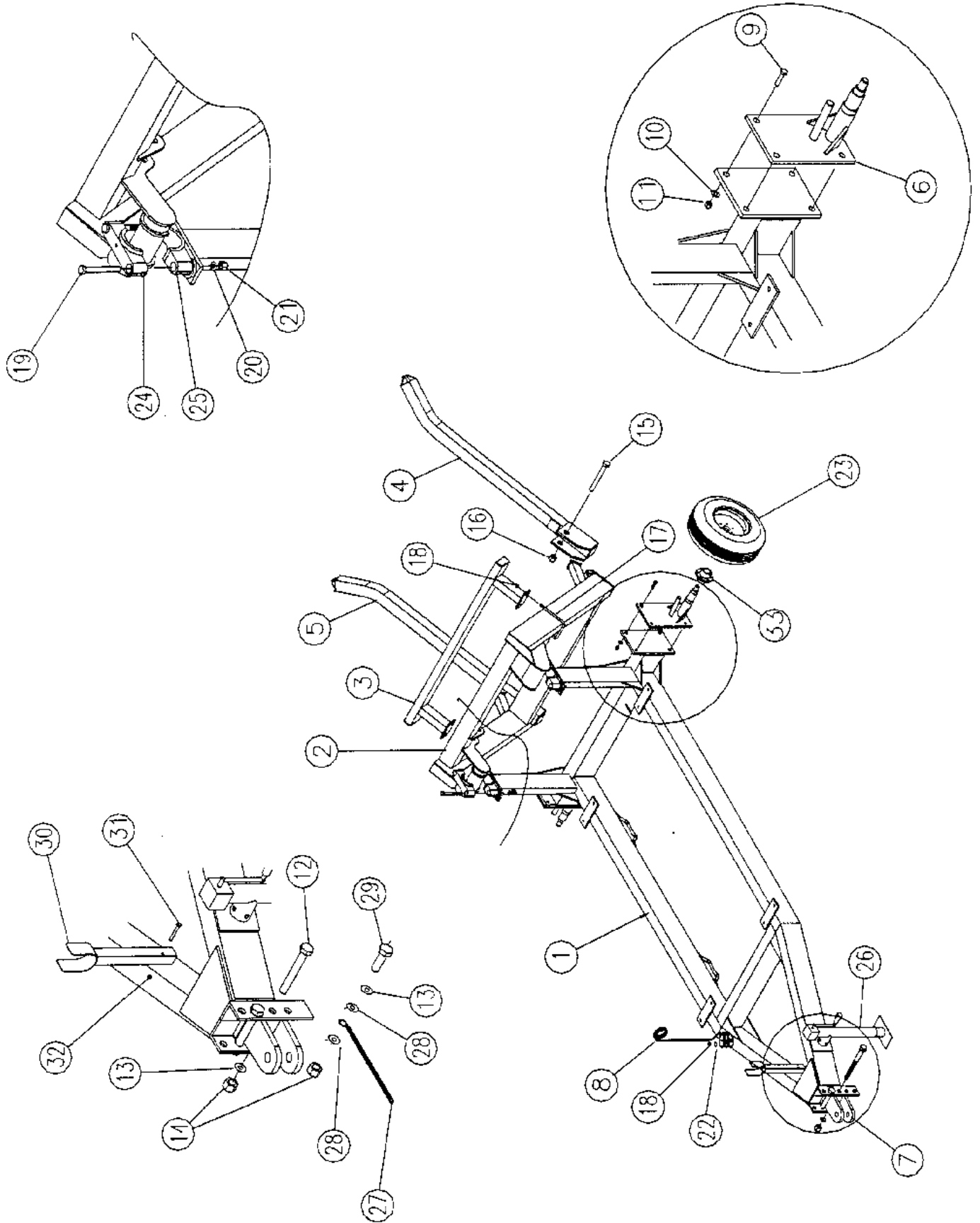
Highline

6.21 Hub Assembly



Item No.	Part No.	Description	Qty
1	30346	Oil Seal	1
2	30345	Bearing, 1-1/4" Bore	1
3	30373	Hub	1
4	30344	Bearing, 1-1/2" Bore	1
5	30371	Washer	1
6	30372	Casellated Nut	1
7	31183	3/16" x 2" Cotter Pin	1
8	30342	Dust Cap	1
	45224	HA611-9 Hub Complete	

### 6.22 Cart Assembly



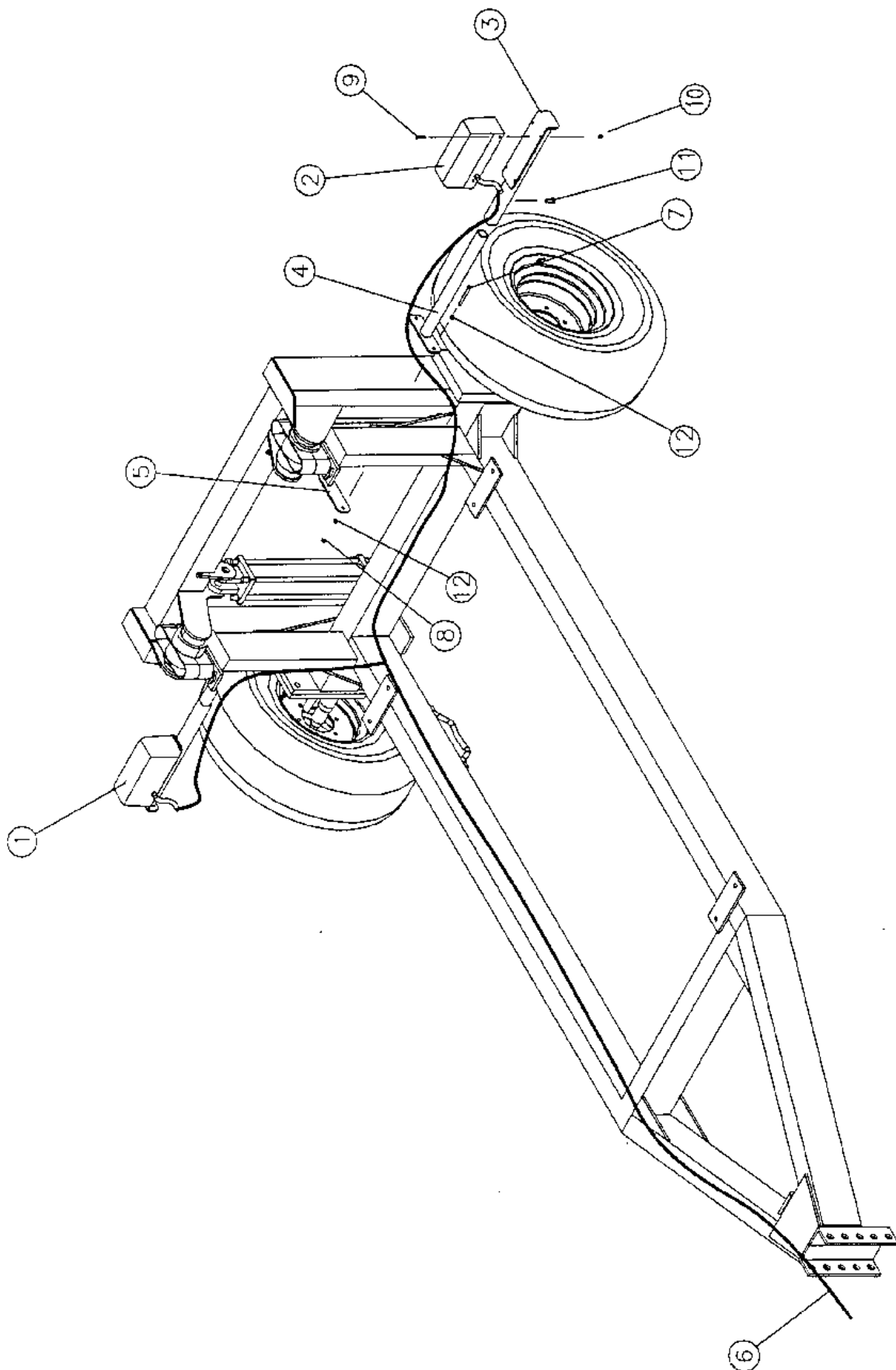


Item No.	Part No.	Description	Qty
1	49019	Frame	1
2	45192	Loading Assembly	1
3	49095	Bumper	1
4	49093	Left Fork	1
5	49094	Right Fork	1
6	49022	Axle Assembly	2
7	45060	Hitch Tongue	1
8	30206	Hydraulic Hose Holder	1
9	31040	3/4" x 2-1/2" Hex Bolt, Unc, Gr 5	8
10	31246	3/4" Lockwasher	8
11	31167	3/4" Nut, Unc, Gr 5	8
12	31038	1" x 7-1/2" Hex Bolt, Unc, Gr 5	2
13	31243	1" Lockwasher	3
14	31162	1" Hex Bolt, Unc, Gr 5	3
15	31034	1-1/4" x 6" Hex Bolt, Unc, Gr 5	2
16	31171	1-1/4" Nylock Locknut, Unc, Gr 5	2
17	31061	1/2" x 3" x 7" U Bolt	2
18	31173	1/2" Nylock Locknut, Unc, Gr 5	5
19	31057	5/8" x 4-1/2" Hex Bolt, Unc, Gr 5	4
20	31240	5/8" Flatwasher	4
21	31178	5/8" Nylock Locknut, Unc, Gr 5	4
22	31236	1/2" Flat Washer	1
23	49090	Wheel Assembly (complete)	2
24	30230	Top Pipe Clamp	2
25	30231	Bottom Pipe Clamp	2
26	92095	5000 lb. Hitch Jack	1
27	31590	Safety Chain	1
28	31235	1" Flatwasher	2
29	31471	1" x 3" Hex Bolt, Unc, Gr 5	1
30	49020	CV Holder	1
31	30374	3/8" x 3" Hex Bolt, Unc, Gr 5	1
32	31176	3/8" Nylock Locknut, Unc, Gr 5	1
33	45224	Hub	2

- Vermeer yellow  
Rim

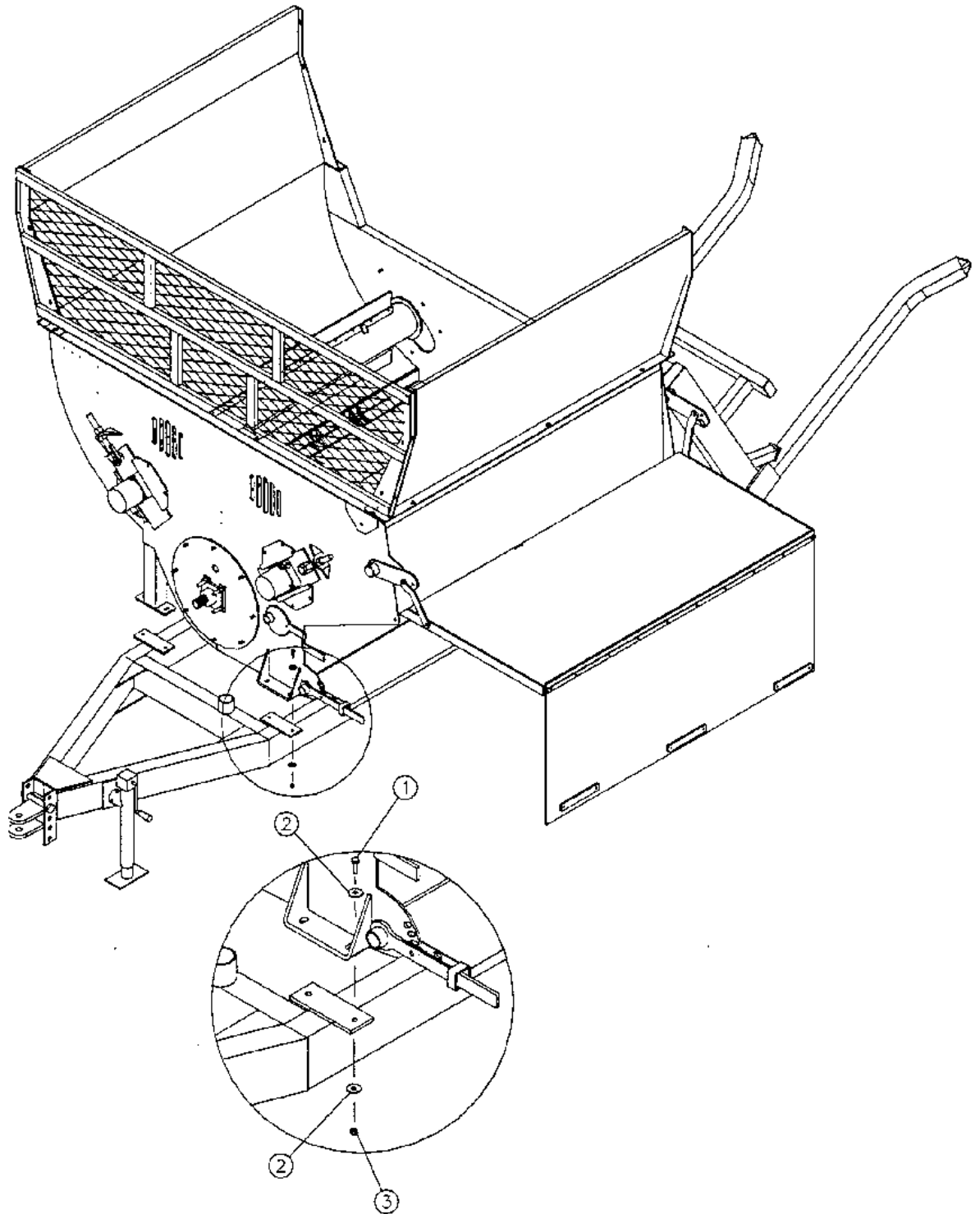
33 44084 Wheel Assembly (Complete) Highline Mfg.

### 6.22 Light Installation



Item No.	Part No.	Description	Qty
1	30527	Right Light	1
2	30526	Left Light	1
3	49082	Outer Telescopic Light Mount	2
4	49081	Inner Telescopic Light Mount	2
5	E3759	Light Mount Plate	2
6	48104	Wiring Harness	1
7	31324	5/16" x 3-1/4" Hex Bolt, Unc, Gr 5	4
8	31177	5/16" Nylock Locknut, Unc, Gr 5	4
9	31581	1/4" x 1-1/4" Hex Bolt, Unc, Gr 5	8
10	31174	1/4" Nylock Locknut, Unc, Gr 5	8
11	31043	3/8" x 1" Hex Bolt, Unc, Gr 5	2
12	31239	5/16" Flatwashers	8

### 6.23 Tub to Cart Installation

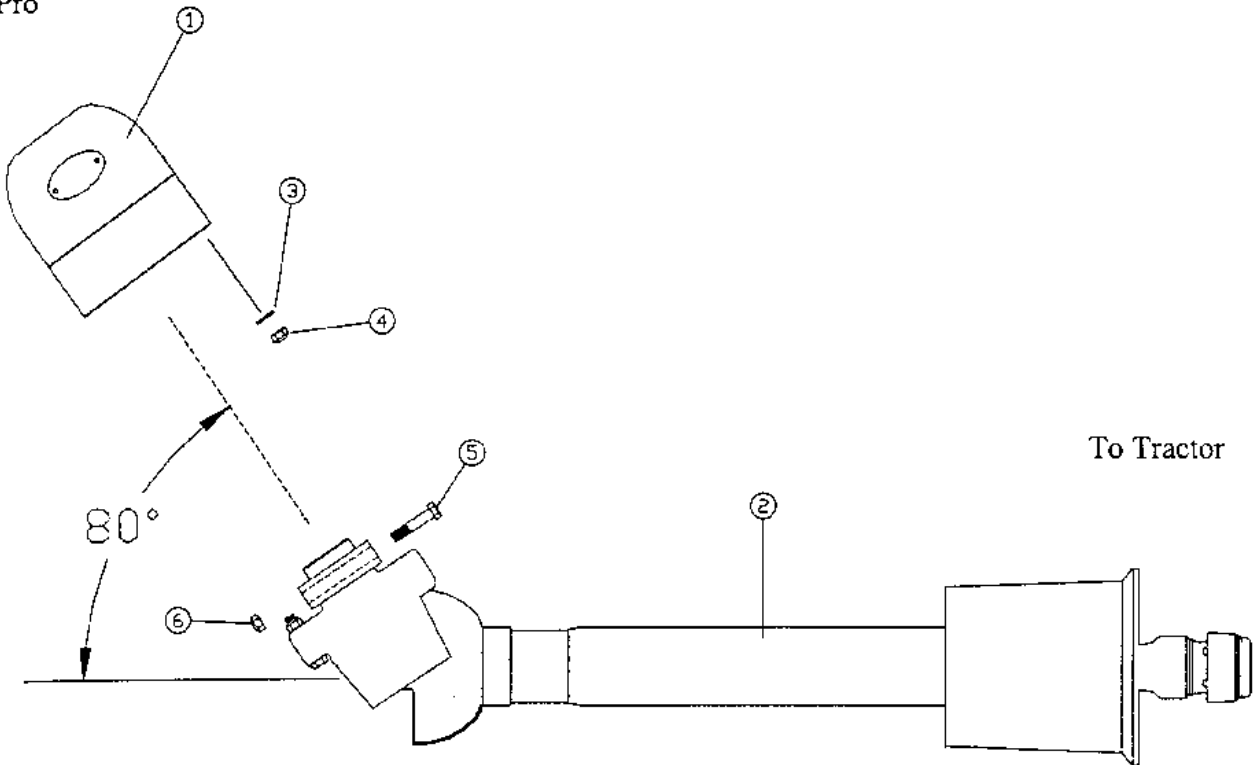


Item No.	Part No.	Description	Qty
1	31017	1/2" x 1-3/4" Hex Bolt, Unc, Gr 5	8
2	31236	1/2" Flatwasher	16
3	31173	1/2" Nylock Locknut, Unc, Gr 5	8

6.24 CV Installation

To Bale Pro

To Tractor



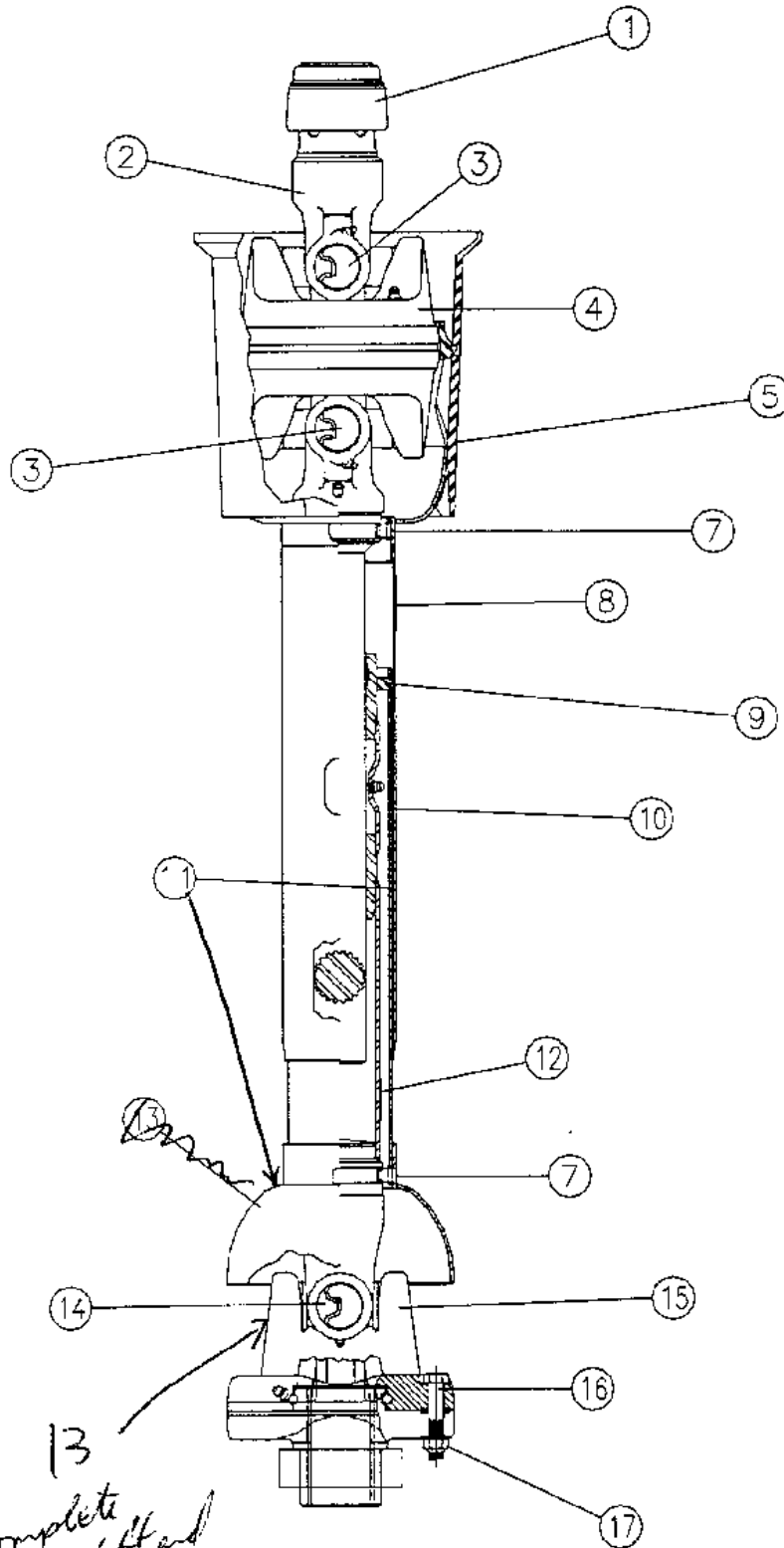
**⚠ NOTE: EXCEEDING AN 80 DEGREE ANGLE BETWEEN BALE PROCESSOR AND TRACTOR WILL VOID CV WARRANTY**

CV NOT TO BE USED ON THE FRONT OF BI-DIRECTIONAL TRACTOR, OTHERWISE WARRANTY WILL BE VOID

Item #	Part #	Description	Qty
1	30284	CV Shield	1
2	45275	CV	1
3	31240	5/8" Flatwasher	8
4	31168	5/8" Nylock Jamnut, Unc, Gr 5	4
5	31056	5/8" x 3-1/2" Hex Bolt, Unc, Gr 5	2
6	31178	5/8" Nylock Locknut, Unc, Gr 5	2

*complete P70*

### 6.25 CV Assembly

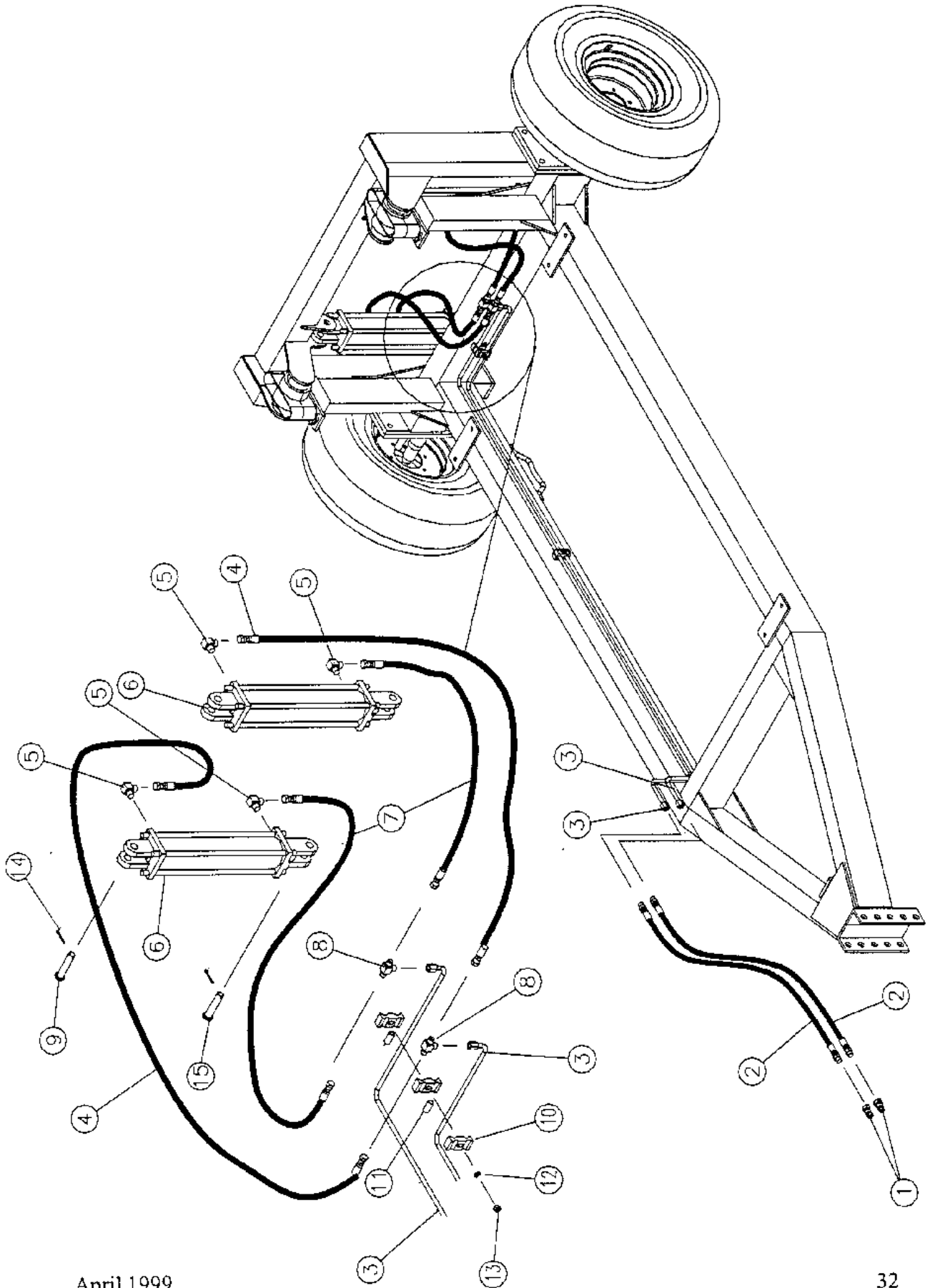


13  
Complete  
yoke, shaft and  
slip sleeve less  
guard.

Item No.	Part No.	Description	Qty
1	30352	Auto Lock Repair Kit	1
2	30353	Auto Lock Yoke Assembly	1
3	30354	Cat 4 80 Degree Cross and Bearing	2
4	30355	Center Housing	1
5	30356	Bell Extension (With Centralizer)	1
6	30357	Yoke and Shaft <i>no guard</i>	1
7	30616	Non Rotation Guard Repair Kit	2
8	30359	Safety Sign	1
9	30617	Centralizer	1
10	30618	Outer Guard	1
11	30619	Inner Guard	1
12	30363	Safety Sign	1
13	30364	Yoke, Tube, and Slip Sleeve <i>no guard</i>	1
14	30365	35R Cross and Bearing Kit	1
15	30366	Ball Shear Assembly	1
16	30367	3/8" x 2" Hex Bolt, Unc, Gr 5	1
17	30368	3/8" Locknut, Unc, Gr 5	1
	30612	Joint and Shaft Half Assembly (with guard)	
	30613	Joint and Shaft Half Assembly	
	30614	Joint and Tube Half Assembly (with guard)	
	30615	Joint and Tube Half Assembly	

*18 31685 yoke - 1 3/4 - 20 spline*

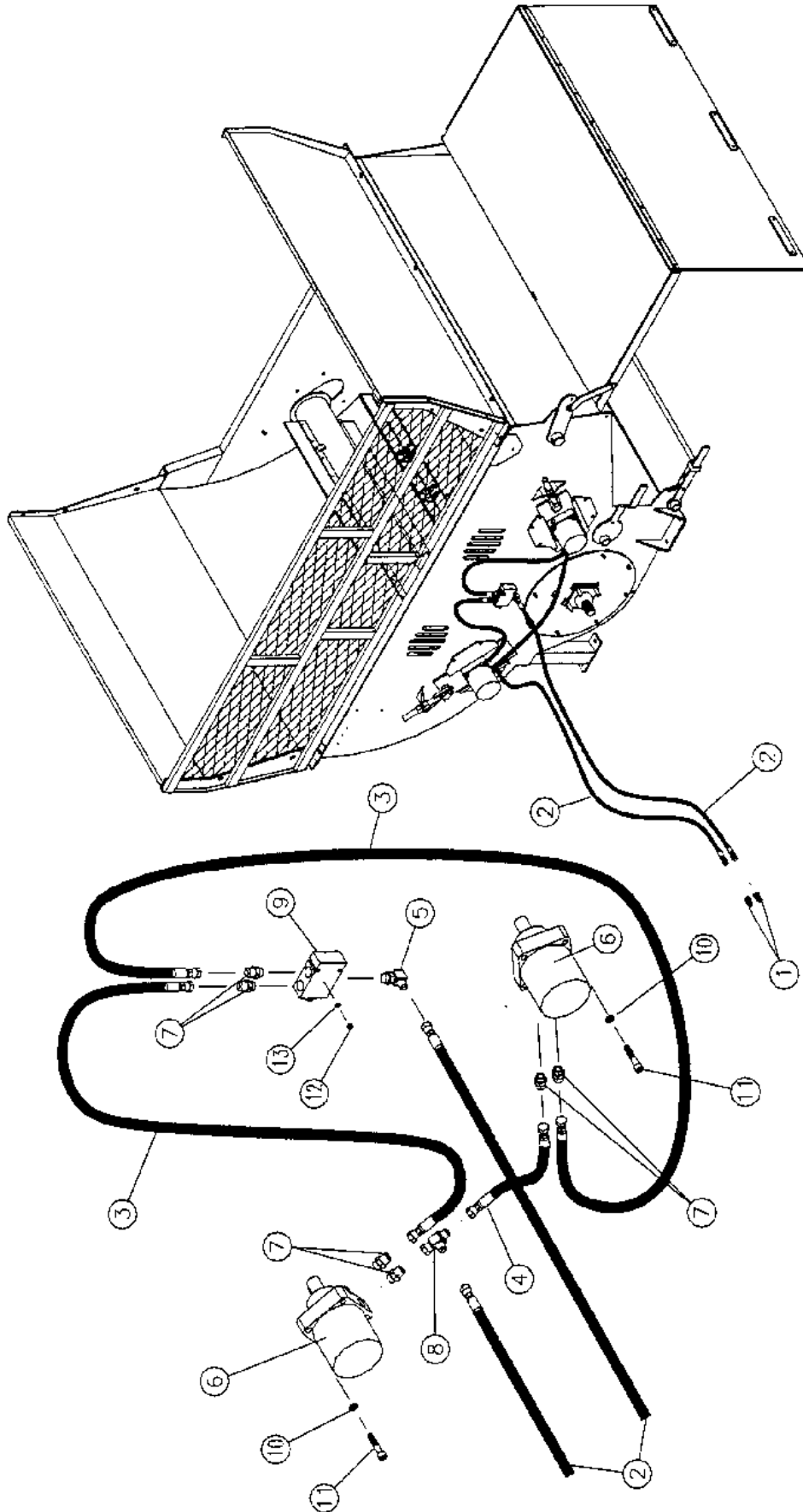
### 6.26 Cylinder Hydraulics





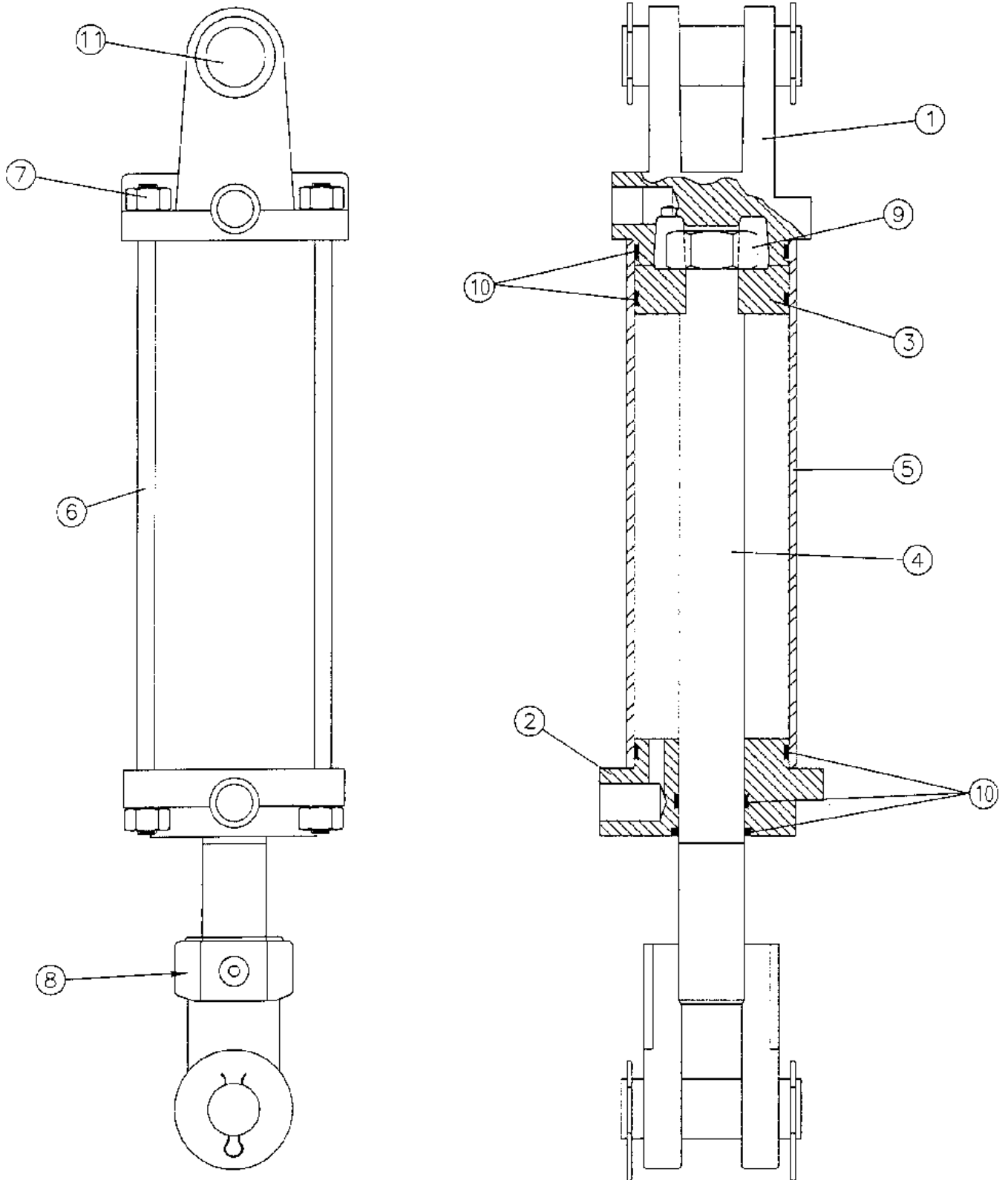
Item No.	Part No.	Description	Qty
1	30209	1/2" Pioneer End	2
2	30280	3/8" x 96" 8MP - 8MJX Hose	2
3	30275	1/2" Steel Line	2
4	90333	3/8" x 28" 8FJX Hose	2
5	30212	8MP - 8MJ90 Fitting	4
6	90133	3" x 16" - 1-1/2" Rod Hydraulic Cylinder	2
7	90332	3/8" x 20" 8FJX Hose	2
8	30313	8MJT Fitting	2
9	45185	Top Cylinder Pin	2
10	30210	1/2" Hydraulic Hose Clamp	9
11	E3669	Hydraulic Line Spacer	4
12	31239	5/16" Flatwasher	3
13	31177	5/16" Nylock Locknut, Unc, Gr 5	3
14	31183	3/16" x 2" Cotter Pin	6
15	32250	Bottom Cylinder Pin	2

### 6.27 Motor Hydraulics



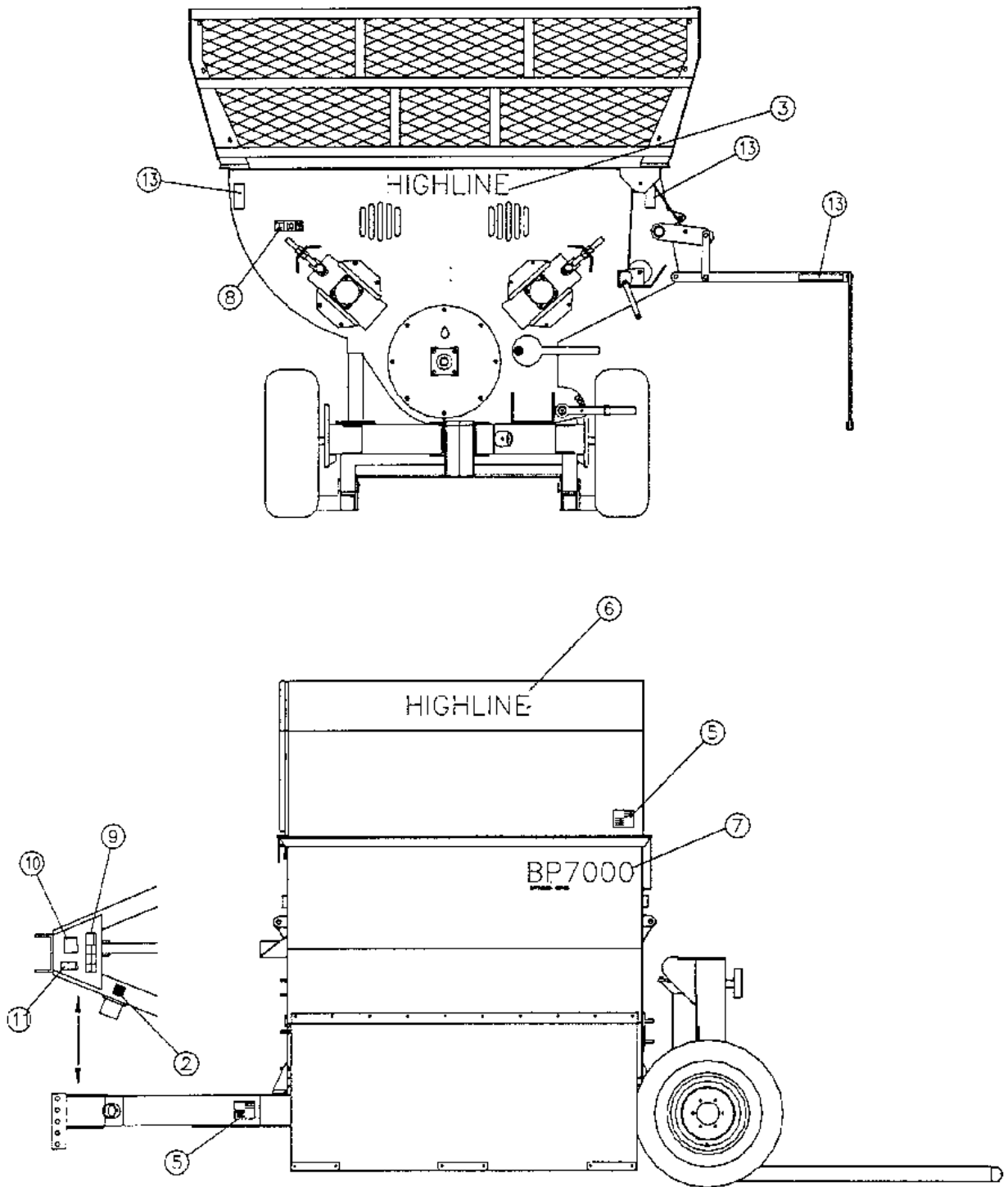
Item No.	Part No.	Description	Qty
1	30209	1/2" Pioneer End	2
2	30281	1/2" x 96" 8MP - 8FJX Hose	2
3	90240	3/8" x 36" 8FJX Hose	2
4	90271	3/8" x 42" 8FJX Hose	1
5	30145	10MBX - 8MJ90 Fitting	1
6	92145	Hydraulic Motor	2
7	30204	10MB - 8MJ Fitting	6
8	30150	8FJXR - 8MJT	1
9	45232	Flow Divider	1
10	31244	1/2" Lockwasher	8
11	31059	1/2" x 2-1/2" Socket Head Capscrew	8
12	31174	1/4" Nylock Locknut, Unc, Gr 5	2
13	31237	1/4" Flatwasher	2

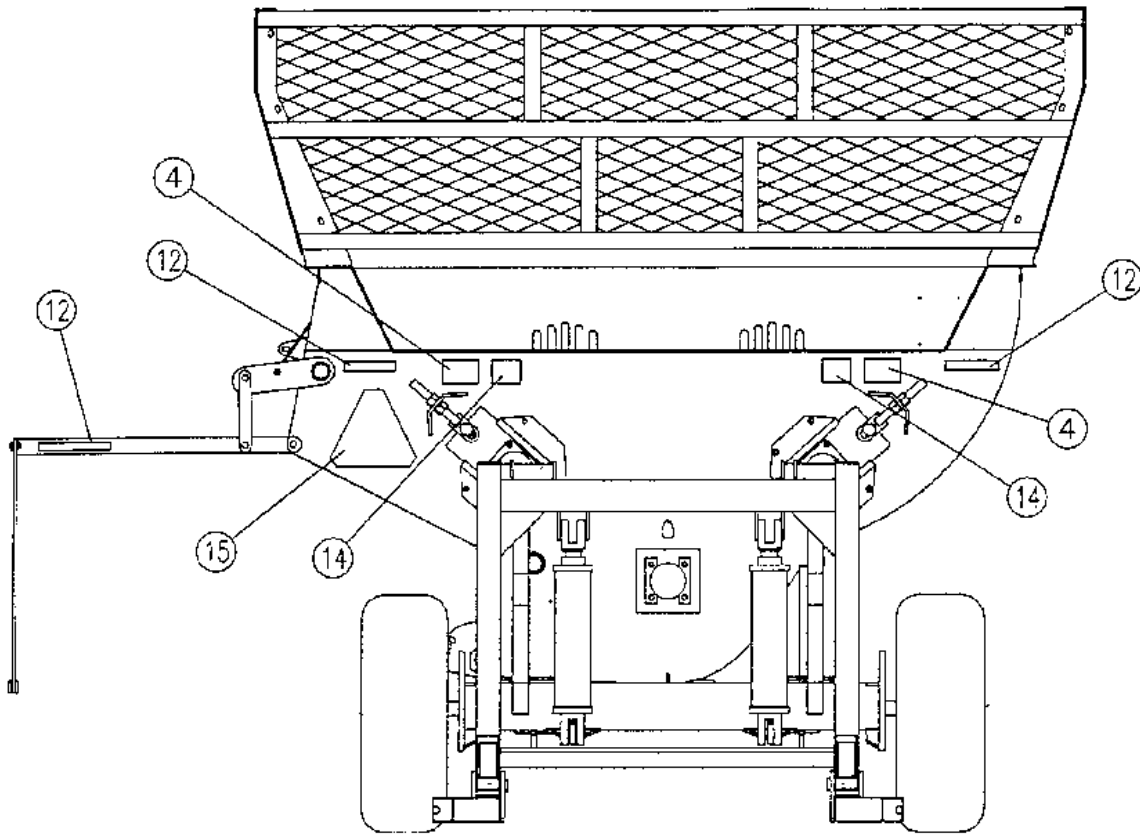
### 6.28 Cylinder Assembly



Item No.	Part No.	Description	Qty
1	90991	Clevis Cap	1
2	32257	Rod Cap	1
3	90706	Piston	1
4	90846	1-1/2" Rod	1
5	90993	Cylinder Tube	1
6	90802	1/2" Tie Rod	4
7	90800	1/2" UNF Nut	8
8	90849	Rod Clevis	1
9	90722	1-14 UNF Nut	1
10	90676	Seal Kit	1
11	45185	Top Cylinder Pin	2
	90133	3" x 16" - 1-1/2" Rod Cylinder	

### 6.29 Safety Decal Placement





Item No.	Part No.	Description	Qty
1	30563	Decal - PTO Rotating Driveline	1
2	92562	Decal, Warning, Jack, Hitch	1
3	92579	Decal, Highline, 4x30	1
4	30566	Decal - Danger	2
5	30567	Decal - Warning	2
6	E5057	Decal, Highline, 72x10	2
7	E5056	Decal, BP7000	2
8	30572	Decal - Warning	1
9	37674	Decal - Warning	1
10	30574	Decal - Warning	1
11	30575	Decal - Drawbar	1
12	E5058	Decal - Red Reflector 2x9	3
13	E5059	Decal - Amber Reflector 2x9	3
14	30579	Decal - Warning	2
15	92028	Slow Moving Sign	1

## 7. Specifications

Recommend	
Minimum Horsepower required:	85 HP
Capacity:	2 bales - 6' long, 6' diameter or smaller
Flail Drum Length	70-1/4"
Flail Drum Diameter	20-5/8" Balanced
Flails	26 - 7/16" x 6-7/16" Tempered Spring Steel
Tires	2 - 11L x 15 Highway Service
Height:	105-1/2" (Fully Assembled)
Width	104-1/2"
Length	179"
Weight	4000 lb.
CV Requirements:	1000 RPM Power Take Off
Dual Hydraulics	Dual Remote, 2000 psi
Cylinders	2 - 3" x 16", 1-1/2" Rod Diameter.